

theatre exile

WORLD PREMIERE

D P A D



by **JEREMY GABLE**

DIRECTED BY BREY ANN BARRETT

Honorary Producers: Linda & David Glickstein

Associate Producer: Fox & Dog

Community Partner:

Drexel Entrepreneurial Game Studio

www.theatreexile.org



**TICKETS AVAILABLE FOR OUR
NEXT TWO SHOWS!**

**SIN
EATERS**

by ANNA MOENCH

DIRECTED BY MATT PFEIFFER

February 11-28



PASS

by ANTOINETTE NWANDU

DIRECTED BY OZZIE JONES

April 22-May 9

theatre exile



2020-2021 SEASON

Visit www.theatrexile.org for tickets.

Honorary Producers
Linda & David Glickstein

Associate Producer
Fox & Dog

Community Partner
Drexel Entrepreneurial Game Studio

D PAD
by JEREMY GABLE

CAST
(Alphabetical)

Ang Bey Alex
Michael Doherty* Sprite Atlas
Paloma Naé Irizarry Negrón Rachel
Anthony Martinez-Briggs* Justin/Todd

Director Brey Ann Barrett	Stage Manager Nic Labadie-Bartz*	Lighting Designer Amanda Jensen
Composer & Sound Designer Liz Filios	Set & Props Designer Marie Laster	Media Designer Colin Sass
Costume Designer Ariel Wang	Production Manager Evelyn Swift Shuker	Video Editor Kelly Orenshaw
OBS Programmer John Kolbinski	Assistant Sound Designer Helian Zhang	Assistant Director Sisi Wright

D-Pad is part of the Glass Ceiling Series, and is produced in association with Fox & Dog, LLC. This production has been uniquely adapted for a virtual platform by the playwright with Theatre Exile.

D-Pad is supported by the Tides Foundation, on the recommendation of Venturous Theater Fund

Theatre Exile is a member of Theatre Communications Group (TCG), the national organization for the American theatre.



*Member of Actors' Equity Association,
the Union of Professional Actors and
Stage Managers in the United States.



National
New Play
Network Associate Partner

A NOTE FROM PRODUCING ARTISTIC DIRECTOR DEBORAH BLOCK



This past spring when we should have been announcing our next season and planning for summer celebrations and gatherings, we needed to take a moment to assess. *What role does Theatre Exile play in our community? Is our inability to gather at the heart of who we are? Should we be closing the doors of our brand-new theater?*

While being together is our joy and cannot be replicated by anything that we do through a screen, it is not all of who we are. Theatre Exile tells stories. We select scripts that stimulate conversations that help

give form to the ideas within us and open doors to new ones.

Art is a compass for navigating the difficult and uplifting journeys of life. Engaging performances spark conversations, stimulating our introspection and imagination and encouraging us to make more thoughtful decisions. Since you, our daring audiences, have not stopped trying to make this world a better place, we knew that we also must share art and storytelling with you, no matter what the environment.

D-Pad by Jeremy Gable was the first show that we committed to produce in response to the new reality. It was the play that let me know that we can be innovative through all of the restrictions and still continue to serve our audiences. Since Theatre Exile helped develop *D-Pad* through our Studio X-hibition new play development program, the play has been in consideration as one of our main stage shows. But I truly believe that it couldn't be more timely now. Jeremy examined his original stage play and deftly adapted it for an online experience. I believe that he brought the storyline to its most natural state. He ensured that this remote communication between characters was organic. The storytelling techniques you will experience actually enhance our understanding of the story.

D-Pad is a story of isolation and sisterly love. It's a cautionary tale of what happens when you cut yourself off from your friends. And it's a story of a community that knows how to connect even when they are not in the room together. Truly a timely tale.

It's also a story of misogyny, vengeance, and fear. But hey, it's an Exile show.

Theatre Exile is known for taking risks. It's why you come see our work. So thank you for continuing to take risks with us as we discover new ways to tell stories. Thank you for trusting us.

THANK YOU FOR JOINING US IN EXILE,

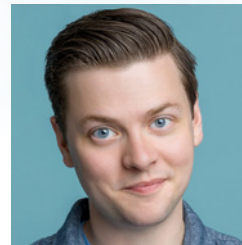
A handwritten signature in black ink, appearing to read 'Deborah Block'.

CAST & CREW



Ang Bey (Alex) Ang Bey (they/them) is a Black, Queer storyteller from Southwest Philadelphia. They are the co-artistic director of Shoe Box Theatre Collective and Wings of Paper Theatre Co. Notable acting credits: *exx...stasis*, *exxx...hale* (Villanova Theatre), *Days of Re-Creation* (Philadelphia Theatre Company), *154 Revisited* (Revolution Shakespeare), *Paul* (Shoe Box Theatre Collective), *Field Calls* (Lupine Performance Cooperative), *Candles* (Philadelphia Young Playwrights), *Bracelet* (John Deswert Film), *Our Ouija Board...* (*On the Rocks*), *Twelfth Night* (Shakespeare in Clark Park), & *The Actors Ensemble* (Sundance Directors Lab). This spring, Ang will perform in *The Niceties* (InterAct). Ang is also a director and award-winning playwright. They are in the inaugural cohort of Jouska PlayWorks (Simpatico Theatre Company) and the upcoming DG Jam (Directors Gathering).

To ancestors past & present, my chosen family, and my love, Rebel. Learn more at angbey.com



Michael Doherty (Sprite Atlas) Michael Doherty graduated from the University of the Arts in 2010 with a BFA in Theatre Arts. Over the last decade, he has participated in nearly 50 theatrical productions across the country, including productions at Arden Theatre Company, The Wilma Theatre, People's Light, 59E59 Theaters, Berkeley Repertory Theatre, Utah Shakespeare Festival, Milwaukee Repertory Theatre, Cleveland Play House, Cincinnati Playhouse in the Park, Connecticut Repertory Theatre, and more. His awards include the Barrymore Award for Supporting Actor in a Musical and the Theatre Bay Area and Bay Area Critic's Circle Award for Leading Performance in a Play. His television pilot, *Los Jarocho*, won Best Writing at the 2013 Independent TV Festival. Michael is a published educational researcher in an ongoing collaboration with the University of Denver distinguishing what makes actors different than other people. Last year, he married fellow actor Alex Keiper during preview week for *The Nerd* at Milwaukee Rep. He is very grateful to Brey, Jeremy, Deborah, and the entire *D-Pad* team. IG: @thedohberman; Website: www.MikeDoh.com

CAST & CREW



Paloma Naé Irizarry Negrón (Rachel) Paloma Irizarry is a Philly-based theatre artist whose work invites audiences to explore the elements of her identity that confound her the most. Recent performances include Ninth Planet's "Honey Honey", "I See You See Me" a solo piece looking at objectification and sexual empowerment, MJ Kaufman's premiere of "Destiny Estimate" and La Fabrica's "Azul". Her TO journey began in 2015 with a Blind Games workshop. Since then, she has co-facilitated and co-created several workshops, including "Unpacking Race" and "Borderlands: Boundaries and Intersections".



Anthony Martinez-Briggs (Justin) Anthony is a 2018 F. Otto Haas Award finalist, Wilma HotHouse company member, curator (Asian Arts Initiative; Bearded Ladies; ILL DOOTS), teaching artist (PYP, Wilma Education, Theater Exile & Village of Arts and Humanities), actor/deviser (Applied Mechanics, Ninth Planet; Bearded Ladies; and the Wilma Theater, among others), writer (2019 theater residency: Kimmel Center; Code Blue, Black Planet, and co-adaptation of *Romeo and Juliet*: Wilma Theater; Bearded Ladies Follicle grant recipient for *UNTITLED*), and Barrymore Award-nominated sound designer (Arden Theater, Simpatico Theater, Passage Theater, Swarthmore College, & Bienvenidos Blancos: Team Sunshine Corp). They are also known as "Us": emcee and original member of the band ILL DOOTS, seen at The Wilma Theater in *An Octoroon* and in Flashpoint Theater's *Hands Up: 6 testaments, 6 playwrights* (Barrymore for Original Music) as well as music venues across Philadelphia and the US. Their most recent albums *The Mess* and 'age' were both released in 2020 and are available everywhere. Stay tuned in at illdoots.com and follow @ILLDOOTS on social media.



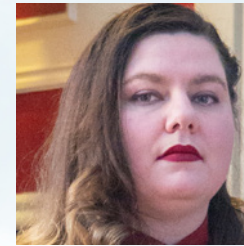
Jeremy Gable (Playwright) is an England-born, Idaho-bred, California-trained, Philadelphia-based writer of plays and games. Theatrical works seen in Philadelphia include Idaho Shuffle (Simpatico), Hero School (Theatre Horizon), and numerous devised works with Ninth Planet, which he cofounded and serves as a company member. He is also a cofounder of Fox & Dog, a Core Playwright alum with InterAct Theatre Company, and the host of the YouTube series *Brand New Relic*. He adapted his play *Watch Me Jump* into a video game, which was nominated for the Independent Game Festival's Excellence in Narrative Award, and created the first full-length fully original plays to premiere on Twitter. He wants to let people know about the Games and Online Harassment Hotline, a free, text message-based, confidential emotional support hotline specifically for the gaming community.

CAST & CREW

Jeremy Gable (Playwright) continued

Text "SUPPORT" to 23368 or visit GamesHotline.org to learn more.

For more info on Jeremy's work, visit JeremyGable.com, and to watch episodes of *Brand New Relic*, check out YouTube.com/gablewriter



Brey Ann Barrett (Director) (she/her/hers) is a California-born, Philadelphia-based director, dramaturg, and producer with a special passion for new play development and modern contemporary classics. She focuses on intimate and familial pieces that address issues of the human condition and can teach empathy through storytelling. She is the Interim Associate Artistic Director after serving as the Artistic Producer and Director of New Play Development. She is also a cofounder of Fox & Dog with Jeremy Gable and the Director of Programming for Directors Gathering. She has worked with Simpatico Theatre, Arden Theatre, Lantern Theatre, Azuka Theatre, Tiny Dynamite, The Eugene O'Neill Theater Center, and Broadway's *Dear Evan Hansen*. She is a graduate of The University of the Arts and a former Directors Gathering Fellow.

**YOU CAN SUPPORT
theatre exile
FROM YOUR SEAT.
Just text "exile" to the number 243725
to make a tax-deductible donation.
Thank you for your support!**

CAST & CREW

Liz Filios (Composer & Sound Designer) Liz Filios is excited to be creating her first virtual sound design for Theatre Exile. She has composed and music directed for the Folger Shakespeare Theatre, Pennsylvania Shakespeare Festival, People's Light & Theatre Co, Delaware Shakespeare, and Chicago Shakespeare Theatre. Liz studied Musical Theatre at the University of Michigan, and has performed with Inis Nua, Theatre Horizon, Delaware Theatre Company, the Bearded Ladies Cabaret, The Wilma Theater, Arden Theatre, Act II Playhouse, and the Walnut Street Theatre. Many thanks to Brey, John, Nic, Helian and Evelyn for guiding this process.

Amanda Jensen (Lighting Designer) Amanda Jensen is a Philadelphia-based lighting designer. She has designed for The Arden (*Treasure Island, Snow White*), Inis Nua (*A Hundred Words for Snow, The Monster in the Hall, Love Lies and Taxidermy, The Swallowing Dark, Radiant Vermin, Spine*), Almanac Dance Circus Theatre (*The Edge, Communitas Five Years Later, Jeanne/Jean/John/Jawn, XOXO Moongirl*), Theatre Exile (*Really*), Teatro Del Sol (*Good Cuban Girls*), The Lantern (*The Heir Apparent*), and Gunnar Montana Productions (*Kink Haus, Wroughtland*). Her work for the 2017 production of Kink Haus was exhibited at the 2019 Prague Quadrennial as part of the USITT/USA exhibition of professional designers. Amanda is also a founding member and resident designer for Paper Doll Ensemble, a Philadelphia based devising company.

Marie Laster (Set & Props Designer) Marie Laster is a set designer born and raised in Philly. Scenic design credits include *Untitled* (Inis Nua Theatre), *Cry it Out, Natural Shocks* (Simpatico Theatre), *Donna Orbits the Moon* (Tiny Dynamite), *The Agitators* (Theatre Horizon), Rachel (Quintessence Theatre), *Looking Over the President's Shoulder* (Act II Playhouse). Marie received a Bachelor of Architecture degree from Philadelphia University and enjoys channeling her creative energy through the scenic design process. www.marielasterdesign.com

Kelly Orenshaw (Video Editor) Kelly Orenshaw went to DeSales University and graduated in 2009 with a B.A in Theatre. She gained a love of editing while working at Scribe Video Center. Since then, she has worked on various editing projects over the years. She currently works as the Technical Director for the City of Philadelphia's Venice Island Performing Arts Center. Kelly also is a proud co-founder of Shoe Box Theatre Collective.

CAST & CREW

Colin J. Sass (Media Designer) Colin J. Sass (he/him) currently lives and works in Philadelphia. An alumnus of the University of the Arts, he holds a BFA in Theater Design and Technology. His knowledge of Lighting and Video Design have been put to good use during the live event industry's transition from in person experiences to virtual ones. Over the last few months, along with other members of 10th Floor Productions, Colin has designed the lighting and video for live streamed concerts as well as virtual productions. In the 2020 Philadelphia Fringe Festival, Colin was the lighting director for *Villager*, the video designer for *We're Here Because You Are*, and the video editor for *The Bodice Ripper Project*. More recently, Colin has started creating virtual 3D environments and even a music video in the Unreal Engine, as well as more abstract visuals in TouchDesigner. Find examples of his work at www.colinjassdesign.com.

Ariel Wang (Costume Designer) Ariel (Liudi) Wang is a freelance Costume Designer and Makeup Designer. She came to the US from Beijing, China for graduate school and achieved her MS in Communication Management and MFA in Costume Design at Temple University. Her recent credits include Costume Designs for *Sunset Baby, Ready Steady Yeti Go* at Azuka Theatre, *Babel*, and *Among the Dead* at Theatre Exile, *Natural Shocks, Cry It Out* at Simpatico Theatre, *Medea* at Hedgerow Theatre, *A Hundred Words for Snow* at Inis Nua Theatre Company, *Original devised play In America: That is to Say Nowhere* at Rowan University, and *Our Town, The Odyssey* at Temple University.

Helian Zhang (Assistant Sound Designer) Zhuoying Zhang, known as Helian, is a filmmaker and mostly works as an audio engineer, a colorist and a DIT in video production. She graduated from Temple University in late 2016 with a master's degree in Film and Media Art. She has worked for a variety of productions including features, documentaries, top brands commercials, reality shows and web series, and has a wide and rich spectrum of experience and knowledge of video production. She's excited to join *D-Pad* as an assistant sound designer and expand her work experience into the theater world.

Nic Labadie-Bartz (Stage Manager) Nic Labadie-Bartz (they/them) is a freelance stage manager based in Philadelphia. They are an associated artist with Applied Mechanics, and work regularly with them, The Bearded Ladies, and Nichole Canuso Dance Company. They have also worked with Pig Iron Theatre Company, Headlong, Ninth Planet, New Paradise Laboratories, Orbiter 3, Cursed Church Theatre, Stephanie Blythe, MJ Kaufman, Mary Tuomanen, Annie Wilson, Michael Kiley, Suli Holum, and Martha Stuckey, among others.

CAST & CREW

Evelyn Swift Shuker (Production Manager) Evelyn Swift Shuker (she/her) is an eclectic theater person of Philadelphia. She is a technician, writer, light designer, production manager, and performance artist, at theaters too numerous to be worth listing. Recently, she's been with Theatre Exile, FringeArts, and The Bearded Ladies, and at home writing prose she doesn't want to share. If you work in the theater, you've probably at least seen her; she's that trans woman with half her head shaved. www.eveshuker.com

John Kolbinski (OBS Programmer) Digital work: *Uncle Vanya*, *Men on Boats* (Fordham); *It's not a trip, It's a journey* (Chautauqua Theater Co); Live Theater: *The Winter Wonderettes* (Hampton Arts, The American Theatre); *Popcorn Falls*, *Civil War Voices*, *The Winter Wonderettes*, *Baskerville*, *Souvenir*, *The Gift*, *Last of the Red Hot Lovers*, *A Child's Christmas in Wales*, *Always...Patsy Cline* (Walnut Street Theatre); *The Two Gentlemen of Verona* (Shakespeare in Clark Park); *Basic Witches* (Robert Hager); *Behold Her* (FringeArts/ Half Key Theatre Co); *Mort* (New Paradise Laboratories); *Every Brilliant Thing* (Arden/Milwaukee Rep). He is also the Audio Engineer at Arden Theatre Company and InterAct Theatre Company; Sound Supervisor, Chautauqua Theater Company. Sound Systems Designer, InterAct's Drake Theater. Sound Designer, *Beyond the Story* Podcast series.

Sisi Wright (Assistant Director) Sisi Wright is an artist, arts administrator, educator, and advocate for art and its capacity to facilitate empathy. Fueled by a love of supporting fellow artists and a desire to contribute to the development of the relationships between and opportunities for theatre makers in the artistic community, she approaches her work with an open heart and eager attitude! She also serves as the Director of Membership + Engagement at Directors Gathering and is, concurrently, the Associate Business Manager at The Wilma Theater and an associate of Simpatico Theatre. Thank you to the director, stage manager, cast, creative team, and the entire Theatre Exile staff for making this experience so worthwhile!

Deborah Block (Producing Artistic Director) Deborah Block has been a consistent figure in the Philadelphia arts community for over 30 years as a director, dramaturg, producer, curator, choreographer and educator. Deborah has been with Theatre Exile since 2006 and assumed the position of Producing Artistic Director in 2013. Prior to that she was one of the founding organizers of the Philadelphia Live Arts Festival and Philly Fringe (now FringeArts) and was the program director for ten years. She received her MFA at Temple University where she taught for nine years. Prior to that she taught at Rowan University, University of the Arts, and was a teaching artist in many K-12 programs. She has received much recognition for her professional and educational work including receiving the Independence Fellowship in the Arts and the Albert Benzwie Award for playwriting. She is currently on the board of Theatre Philadelphia and

THANK YOU
TO EVERYONE
WHO MADE
**CABARET
OF THE EXILED**

A VIRTUAL SUCCESS!

CABARET SPONSORS

Brandywine Realty Trust

Southern Land Company

Stark & Stark and Michael Donahue

En Route

Anna Maria & Rich DiDio

Peg & Michael Kramer

Tom & Alycia Scannapieco

Michael Wax and Christine Frost Red

June and Steve Wolfson

Palmer Distilling

CAST & CREW

Deborah Block (cnt'd.) Deborah Block

has sat on many local and national panels. A sampling of her previous affiliations include Brat Productions, Theatre Ariel, Philadelphia Young Playwrights Festival, The Wilma Theater and the CEC. She has worked on over 50 professional productions. For Theatre Exile she has directed *Babel, Among the Dead, Sing the Body Electric, Guards at the Taj, Smoke, Red Speedo, Cock, The English Bride, Gruesome Playground Injuries, Iron, Hunter Gatherers, dark play or stories for boys, Roosters* and collaborated on *Hearts & Soles*.

Theatre Exile is dedicated to enhancing the cultural experiences of Philadelphians through the staging of works that engage the imagination. Founded in 1996 by Joe Canuso and Trish Kelly, Theatre Exile was created by a group of artists who wanted to rattle the gates of the mainstream. In July, 2013 Deborah Block took on the role of Producing Artistic Director. Under her leadership Exile continues to produce plays that explore the complexities of the human condition packed with Philadelphia grit and passion. Exile is the first Philadelphia organization to produce such powerhouse playwrights as Tracy Letts, Lucas Hnath, Annie Baker, Rajiv Joseph, Rona Munro, and Hansol Jung among others. In 2016 Exile was named most fearless theatre by Philly Currents and Best Theater Company by Philadelphia Magazine. Exile received the Time Out Recommended Award 2017. For excellence in producing theatre, Exile has received 92 Barrymore nominations, with 19 awards. In 2017 Theatre Exile left their home to begin a new phase in Exile's life. Following her idea to create a new home in their old location in South Philadelphia, Deborah with the Board of Directors collaborated with Center City Development and Cecil Baker + Partners, and created a vision for a new theater that honors the art and maintains Exile's goals of working in an intimate and flexible environment. They produced their first play in the new theater in February 2019 and moved their office to the new space in April 2019. We look forward to next season when Exile will have its first full season in the new theater.

Actors' Equity Association (AEA) was founded in 1913 as the first of the American actor unions. Equity's mission is to advance, promote and foster the art of live theatre as an essential component of our society. Today, Equity represents more than 40,000 actors, singers, dancers and stage managers working in hundreds of theatres across the United States. Equity members are dedicated to working in theatre as a profession, upholding the highest artistic standards. Equity negotiates wages and working conditions and provides a wide range of benefits including health and pension plans for its members. Through its agreement with Equity, this theatre has committed to the fair treatment of the actors and stage managers employed in this production. AEA is a member of the AFL-CIO and is affiliated with FIA, an international organization of performing arts unions. For more information, visit www.actorsequity.org.

THEATRE EXILE STAFF

Brey Ann Barrett.....	Interim Associate Artistic Director
Deborah Block.....	Producing Artistic Director
Anne Marie Cammarato.....	Grant Writer
Denise Cavaliere.....	Director of Individual Giving
Brenden Dahl	Virtual Intern
Edgimo.com.....	Web Design
Carter Ford.....	Rental Support
Kyleen Goode.....	External Relations Associate
Nikki Hagedorn.....	Graphic Designer
TS Hawkins.....	Education Director & Virtual Patron Support
Randi Alexis Hickey.....	Virtual Patron Support
Sebastienne Mundheim.....	Out of Exile Program Director
Andrew Nelson	IT Specialist
Matt Pfeiffer.....	Artist in Residence
Carolyn Schlecker.....	Operations Consultant
Evelyn Swift Shuker.....	Production Manager
Autumn Valdez.....	General Manager

BOARD OF DIRECTORS

Executive Committee

Desiree Salera, Chair
Sterling Johnson, Vice Chair
Francis Murphy, Treasurer
Alison Ezell, Secretary

Founders

Joe Canuso and Trish Kelly

Board Members

Deborah Block
Michael Donahue
Brett T. Mapp
Betsy Oliphant Ross
Bryna Scott
Dr. Jeffrey Sorkin
Reuben Wade

Exile Advisors & Committee Members

Ken Bingham
Robert Dever
Patricia Forcina
Vincent E. Fumo
Maria Gallagher
Anne Gemmell
Shirley Lockwood
Doug Smullens

SPECIAL THANKS

**Dr. Frank Lee and Drexel Entrepreneurship Game Studio;
Erin Truesdell, Thomas Sharpe, Arianna Gass**

**Amber "Elliface" Gohn | Lindsay Smiling | Amin Bitar and Bitar's
Doug Smullens | Alex Keiper | Rachel Camp | Matthew Decker | Kittson O'Neill
Erin Washburn | Carrie Chapter | Heather Helinsky | InterAct Theatre Company
Great Plains Theatre Conference**

SUPPORTERS

We would like to give an extra special thanks to the foundations, corporations, and individuals whose generosity supports our work.

(This list includes gifts received from July 1, 2019 - November 24, 2020)

Foundations and Government

Charlotte Cushman Foundation
Commonwealth of Pennsylvania
EFM Foundation
Independence Foundation
JMC Fund
LIDA Foundation
Pennsylvania Council on the Arts
The Philadelphia Cultural Fund
PIDC Community Capital
Stockton Rush Bartol Foundation
Suzanne F. Roberts Cultural Development Fund
Sylvia W. and Randle M. Kauders Foundation
The Blackbaud Giving Fund
The Shubert Foundation
Venturous Theater Fund,
a fund of Tides Foundation
William Penn Foundation
William K. Stewart Sr. Foundation
The Wolfson Family Foundation
Wyncote Foundation

Corporate Donations

Brandywine Realty Trust & Jerry Sweeney
Dell Giving
En Route
Fergie's Pub
Flim Flam Film
Fox & Dog, LLC.
Jensen and Assoc. Inc.
National New Play Network
NovaCare Rehabilitation & Ray Pennacchia
Quaker Printing Group
Southern Land Company, Developers of 1911
Walnut & Tim Downey
The Victor Cafe
Tiny Dynamite Productions
WXPX

Society of Exiles

Fairley & Cecil Baker
Dr. George & Cynthia Barth
Leonard Haas & MaryLee Bednarek
Barbara Block
Louis Bluver
Isabelle Buonocore
Jennifer & David Cardy
Robert M. Dever
Tobey & Mark Dichter
Ben Dickinson
Maria Gallagher & Ray Didinger
Anna Maria & Rich DiDio
Alison Ezell
Gene Gualtieri & Mary McManus
Barbara & Steve Gold
Linda & David Glickstein
Joni Marcus & Ed Greves
Leonard Haas & Louis Bluver
Susan Hoffman
Lorie & Nick Howley
Annabelle Jellinek
Sterling & Deena Johnson
David & Beth Medoway Kagan
Paul Kelly
Marta & Bill Kiesling
Peg & Michael Kramer
Robin Sakina & Saifuddin Mama
Michael Donahue & Alex Moede
Warren Muller
Bill Gehrman & Christopher Mullins, Jr.
Fran & Kathy Murphy
Desiree Salera & Eric Okdeh
Arthur M. Kaplan & R. Duane Perry
Michael Wax & Christine Frost Red

SUPPORTERS

Society of Exiles (cont'd)

Benjamin Zuckerman & Marian Robinson
Michael Phillips & Sue Rock
Majorie Rosenblum
Betsy Oliphant & Andrew Ross
Marie O'Donnell & Bruce Satalof
Alycia & Tom Scannapieco
Andrew & Bryna Scott
Gayle & David Smith
Reuben Wade & Janice Smith
Deborah Block & Doug Smullens
SaraKay & Stanton Smullens
Jim Smyth
Debra and William Stewart
Margaret Harris & Phil Straus
Robert D`Zuro & Kate Sullivan
June & Steve Wolfson
Bruce & Giuliana Zallie

\$500-\$999.

Karen & Mark Belding
Bob & Helen Buttel
James D. Crawford & Judith Dean
Brett Mapp & Morgan Hugo
Judy & Maurice Kaplow
Gene Gualtieri & Mary McManus
Nancy Burd & Mel Nasielski
Jill & Rich Orlando
Clifford Pearlman
Matthew Rader
Pam & Gresham Riley
Kathyanne Cohen & Adam Schless
Dr. Julie Phillips & Chris P. Shaw
Dr. Jeffrey Sorkin
Barbara & James Sterchele
In Memory of Gene Bishop
Diane Dalto & Richard Woosnam

\$100-\$499.

Judy Adamson & Fred Jackes
Khaliyah Ali & Spencer Wertheimer
Dirk Allen & Glenn Sykes
Anonymous
Sarah Anton
Sandra & Jamie Arnold
Dana Ash
Maureen Barden & David Othmer
Pamela Barnett & Jeff Hornstein
Patrick Barrett
Sally & Mo Barron
Carol Beam
Daniel & Susan Behrend
Jay & Nancy Berkowitz
Anonymous
Nancy Boykin & Dan Kern
Dorothy Brown
Daniel Buchanan
Marian & John Bumbaca
William Burrison
Richard Buxton
Anton & Kirsten Canuso
Katie & Bryan Clark
Heather Coyne
David Cramer & Christine Wiita
Fern & John Culhane
Rhonda Dickey
Robert DiSerafino
John & Lois Durso
Nancy & Robert Elfant
Cheryl Fedyna
Charles Flemming
Sabrina Galloway
Joanne Bursich & Randy Giancaterino
Thomas Gibson
Roseann P. Gill

SUPPORTERS

\$100-\$499. (cont'd)

Michael Greer
Davida Grossman & John Spencer
Ralph & Natalie Hirshorn
Joy Hockman & Jack Silverberg
Robert Holum
Esther & Robert Hornik
Margot Horwitz
Caren Hosansky
Natalie Huguet & Frank Trommler
George & Nan Hurley
Pat Hynes
David Ingram & Melanye Finister
Sam Katz
Leslie Kaufman
Bill Keough
Ken Kesslin
George F. Koch, Jr. & Santo A. DiDonato
Valerie Koscelnik
Bob Kosseff & Carolyn Schlecker
Myra Kranzel
Melanie Kzirian
Elisabeth & Russ LaMotte
Michael Lampson & Min-Young Kim
Eva & Michael Leeds
Rebecca Levine
Natalie Levkovich
Gregory & Dr. Cynthia Line
Shirley Lockwood
Kim Loux
Bruce Love
Whit MacLaughlin & Catharine K. Slusar
Cirel & Howard Magen
Anonymous

\$100-\$499. (cont'd)

Rosalie Matzkin
Cary Mazer
Michael McCaney, Jr.
Margaret Miller
Olive Mosier
Shara Neidell & Carlos Martin
Debbie & Henry Newman
Eileen M. O'Brien & Samuel G. Hopkins
Gwen Ottinger
Art Panfile
Guido & Aileen Pasquel
Performing Arts Foundation
Cathy & Frank Pfeiffer
Joseph Phillippi
Stephen Platt & Robin Schaufler
In Memory of Karen Pressel
Laura Regnier
Susan Rock & Michael Phillips
Renée Rollin
Adelle Rubin
Diane Rurode and James Lord
Carol Saline
Lane Savadove
Eric Schaeffer
Raymond Scheinfeld
Pamela Schreiber
Robert & Pamela Shaw
Charlotte Shuman
Gail Sidewater
Anne & Berne Siergiej
Maria S. Sklavos
Corey & Jonne Smith
William & Darlene Smith

\$100-\$499. (cont'd)

Edward Sobel & Judith Levine
Heather Speirs
Margaret Spencer
Joe & Rachel Stern
Julie & Pete Stern
Bert & Lynne Strieb
Frank Trommler
Ronald VanLangeveld & Karen Lichter
Richard Vermeil
Caroline Idinopulos Vigran
Anne & Edward Wagner
Sharon & Paul Waimberg
Robert Wallner
Bob Weinberg & Eleanor Wilner
Christine Wiita & David Cramer
David Williams
Pam & Ed Zenzola
Maria & Michael Zorzy

\$10-\$99.

Sue Aistrop
Joseph Angelastro
Anonymous
Harry F. Bambrick
Michael Bartz
David & Jo Baskin
Benjamin Behrend
Michael Hollinger & Megan Bellwoar
Bruce Benjamin
Irene Berkowitz
Max Bier
Elayne Bloom
Janice Bogen
Damon Bonetti

SUPPORTERS

\$10-\$99. (cont'd)

Anna Boyd
Sabrina Boyd-Surka
Daniel Boylen
Oleg Brovender
Joyce Brzyski
Mary Ellen Burd
Anonymous
Timothy Carey
Liam Castellan
Robert Chalfin
Colleen Coffey
Rosina Coltellarò
Elizabeth Cooper
Gabrielle Corsaro
Emily Costello
Leonard Cupingood
Alexandra Curth
Pat Damico
Emily Darigan
Donna Hunt & Chris Deephouse
Lynn Dellapietra
T. J. Deluca
Robert Dilullo
James Dobner
Marsha Z. Dollinger
Jack Donegan
Katharine Dunlevy
Nena Eskridge
Erica & Matt Ezold
Gregory Falter
Susan Feagin
L M Feldman
Marcia Ferguson
Susan & James Fiordeliso

SUPPORTERS

\$10-\$99. (cont'd)

Lana & Ralph Fishkin
Charles Fitzpatrick
Patricia Forcina
Diane Fromm
Ivan Fuller
Sara Garonzik
Maurizio Giammarco
John Gilland
Stan Glowiak
Bill Goldberg
Leigh Goldenberg & Aaron Bauman
David Goldfarb
Steve Greenberg
Grace Grillet
Terry & Paul Guerin
Stephen Harlen
Jean Haskell
Harriet Power & Bob Hedley
Tom Helmer
Geoffrey Hindle
Michael Hisamoto
Bonny Hohenberger
In Memory of Al Graham & Blanche Thomas
Michael Ippoliti
Anonymous
Jaclyn Janis
Grace Jeschke
Veronica Kain
Gina Kaiser
James Kane
Angela Kapalko
Bruce Katsiff

\$10-\$99. (cont'd)

Dorilona Rose & Michael Kay
Abigail Kay
In Memory of Michael Gannon
Paul Klevan
Leland Kowalski
Anonymous
Barry Lassoff
Martha & Marshall Ledger
Thomas & Paula Legere
Stefanie Leibovitz
Diane Leimbach
Ruthie Levikoff
Joseph Lex
Rachel Lipton
Jean Lock
Margaret H. Lonzetta
Benjamin Lovell
Anonymous
Paul Makurath
Joe & Joanne Mallamaci
Jeffrey Brown & Sandee Mandel
Linda & David Marder
Ellin Martens
Frances G. Martin
James McClory
Lyndsey & Kevin McCormick
Terrilyn McCormick
Ray Costello & Deb Miller
Robert Miller
Richard Moberg
David Penkower & Namrata Narain
Veronica Nitka
Darlene Olsen

SUPPORTERS

\$10-\$99. (cont'd)

Carol Orme-Johnson
Dr. Chelsea Phillips
Rosemary & Frederick Porsche
Carla Puppin
Renee Quarterman
Ms. Susan Reisbord
Elizabeth & Hershel Richman
Laurie & Steven Rosard
Sandra G. Rosenthal
Murray Dubin & Libby Rosof
Judith & Ed Ruback
Sue & Martin Rubel
Fania & Louis Samuels
Domenic Sanginiti
Julianne Schaub
Jeremy Schobel
Megan Schumacher
Deborah Schwartzman
Denise Scobee
Janet & Jerry Selber
Ruth Septee
Rachel Rose Shalev
Amanda Sheldon
Janet Silverstein
Shirley & Cecil Smith

\$10-\$99. (cont'd)

Raymond Sorber
Jane Spencer
Diane & Richard Steinbrink
Karen & Michael Stensgaard
Bill & Debra Stewart
Charles Sutphen Brett Smith
& Joseph Sutton III
Dr. Dolores & George Szymanski
William Scott Thorp
Yannick Trapman-O`brien
Paule Turner
Nicholas Urban
Pamela Walkling
Jeffrey Walls
Valerie White
Howard Green & Julia Williams
Charles Zacney
Dorothy Zubras

In Kind Donors
Maryann Brancaccio
Ray Didinger
Edgimo
International House of Philadelphia, Inc.
Robert J. Kratz & Co.
Palmer Distiling
Marc Vetri, Vetri Cucina
Wawa