

HOW FAR WOULD YOU BE WILLING TO GO TO BE SELECTED FOR A HIT REALITY SHOW?

WORLD PREMIERE

EXTREME

HOME MAKEOVER

Written by **MAKASHA COPELAND**

DIRECTED BY DEBORAH BLOCK

HONORARY PRODUCERS **SUSAN & EDWARD HOFFMAN**

OCTOBER 28 - NOVEMBER 21, 2021

OPENING NIGHT November 3, 2021



theatre exile



Photo by Robert Hakalski



2021-22 SEASON
theatre exile

JOIN US FOR OUR 25TH SEASON
FILLED WITH HUMOR, HOPE &
THEATRE EXILE'S SIGNATURE GRIT!

25
YEARS



EXTREME HOME MAKEOVER
BY MAKASHA COPELAND
OCTOBER 28 - NOVEMBER 21, 2021



THE MOTHERFKER
WITH THE HAT**
BY STEPHEN ADLY GUIRGIS
FEBRUARY 3 - 27, 2022



TODAY IS MY BIRTHDAY
BY SUSAN SOON HE STANTON
APRIL 28 - MAY 22, 2022

3-TICKET PACKAGES STARTING AT \$45

Subscribe to enjoy these exceptional stories during our 25th anniversary season!

NO CREDIT CARD OR SERVICE FEES



EXTREME HOME MAKEOVER

Written by **MAKASHA COPELAND**

HONORARY PRODUCERS **SUSAN & EDWARD HOFFMAN**

PRODUCED BY

theatre exile

CAST

Jessy Gruver*Valentina
 Yajaira Paredes*Guadalupe
 Krystal RosaLupe
 Angel SigalaMarco

CREW

Stage Managers

Nic Labadie-Bartz*
& Molly Norris*

Costume Designer

Ariel Wang

Props Designer

Avista Custom
Theatrical Services

Assistant Stage Manager

Jamel Baker

Director

Deborah Block

Production Manager

Nat Merrill

Scenic Design

Colin McIlvaine

Assistant Scenic Designer

Noelani Montas

Health & Safety Advisor

Jill Knittel, MSN, RN, CIC

Sound Designer

Mark Valenzuela

ASM/COVID Safety Monitor

Lian Brody

Master Electrician

Michael Hamlet

Lighting Designer

Drew Billiau

Scenic Shop

Flannel and Hammer

Rafael Fontones

Digital Cameo & Marco Understudy



*Member of Actors' Equity Association, the Union of Professional Actors and Stage Managers in the United States.

A NOTE FROM PRODUCING ARTISTIC DIRECTOR DEBORAH BLOCK

Welcome to our first indoor live production since March 2020.

We're proud of how we were able to adapt last year. Because our team was intact, we were able to think outside of the box and work together to create a full season of art and experiences. We were among the first to create new online work in this form. We had two fully produced virtual productions. Studio X-hibition went online for some of our most highly attended readings ever. We had a season of free online activities through our aptly named program, Exiled with Exile. We showcased dozens of artists in our two virtual cabarets. We proudly were able to continue our education work "in" the schools. We ended our season with our first live show, performed in a park. And then we launched our 25th Anniversary season this fall with a commissioned production of a new all-ages outdoor show about South Philly called *The Ever Present* by R. Eric Thomas.

There was no rest for the Exile staff who worked tirelessly to create new safety systems and procedures to create and connect with you, our audiences, even as they were working remotely. And our board was a constant guide and source of support as we navigated the ever-changing landscape.

We weren't expecting to start our subscription series with a world premiere. But when the artistic committee read *Extreme Home Makeover* by Makasha Copeland, we were all delighted. I found the play when I attended a virtual version of the San Diego Latinx Play Festival. One of the bright spots of COVID was being able to hear new plays read across the country.

When selecting a season, we sought scripts that dug into the human condition in traditional Exile fashion. But, at a time when we are all learning new rules of survival, it was also important to us that our productions had a pathway for hope. *Extreme Home Makeover* does both. Set against the backdrop of the plight of many Tejanos living in southern Texas, the Vega family is an example of the working poor, where one problem causes a cascading and devastating effect on the solvency of a family. But as Guadalupe, the Abuela (grandmother), says in the play, "scarcity is as old as we are, but we know all of the tricks."

We are proud to launch our 25th Anniversary subscription series with this powerful world premiere. And as we look toward our next 25 years of moving art forward, expect to find more new plays and more seasons filled with humor, hope, and Theatre Exile's signature grit.

Thank you for coming to live theater.

Thank you for joining us in Exile.



Deborah Block
Producing Artistic Direct

CAST & CREW



Jessy Gruver* (Valentina) is thrilled to be making her Theatre Exile debut! Jessy is a Philly-based actor and singer last seen in *Oedipus el Rey* with Teatro del Sol, and *Daphne's Dive* with South Camden Theater Company. She has performed with the Walnut Street Theatre (*South Pacific*), Arden Theatre (*Candide*), Utah Festival Opera, and Musical Theatre (*Hunchback of Notre Dame* and *Seussical*), PIFA/Kimmel Center (*Crystal Palace*), Bristol Riverside Theatre (*Pride and Prejudice*, *Pirates of Penzance*, and *various Musicales*), and the Venetian Macao Resort, among others. Jessy is also a burlesque artist and producer. Thanks and love to P and E. As always, for J. www.JessicaGruver.com



Yajaira Paredes* (Guadalupe) is a Venezuelan actress with an experienced acting career (1980-1995). Yajaira worked in TV as a soap opera co-star, also in theater, and films. In Philadelphia, she took part in a voice-over series for pharmaceutical companies, such as Pfizer, Johnson & Johnson, and Astrazeneca. She returned to the stage as an actress in NYC (2012) and as an actress/producer in Philadelphia (2013), with *Mujeres de Par en Par* by Indira Paez, followed by *Passport* by Gustavo Ott, (2014, Fringe Festival in Philadelphia), and *Bodas de Sangre de Lorca* (2016). Presently, she is one of the creators of Teatro del Sol, the first bilingual theater company in Philadelphia. Most recently, she played the role of Rosellie in *The Sea Voyage* directed by Dan Hodge, PAC, *Good Cuban Girls* by Iraisia Ann Reilly at The Arden Theatre, and *Secret Things* by Elaine Romero with Ariel Theatre. She currently is starring in *A Thousand Fibers* by Alec M. Hersh, Beacon Theatre, at Taller Puertorriqueno. You can follow her on Instagram as @yajairaparedes.



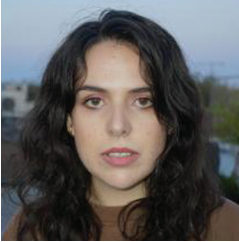
Krystal Rosa (Lupe) is very excited to work with Theatre Exile this season! Moving to Philadelphia from the Poconos has been the best career decision as this is her first professional production. After graduating Temple University, she became a member of Power Street Theatre Company where she worked on productions as either an actor, ASM, marketing manager and/or director. PST is her theatre home. Currently, Krystal is a member of Creative Reaction Dance Company where she trains in different hip hop styles. To follow her journey, follow her on Instagram @sometimesimkool.

CAST & CREW



Angel Sigala (Marco) is an artist born and raised in Mexico City, but delighted to call Philadelphia “home.” Proud graduate of Temple University’s School for Theatre, Film, and Media Arts (BA 2018). Select regional credits: Clyde in *Bonnie & Clyde* (11th Hour Theatre Company), Miguel in *How To Use A Knife* (InterAct Theatre Company), Bellhop in *Lend Me a Tenor* (Resident Theatre Company), Al DeLuca, Paul San Marco in *A Chorus Line* (Bucks County CPA, Ocean City Theatre Company),

Doctor in *Matilda* (The Media Theatre). A big thank you to Makasha Copeland for writing such a beautiful character, and to Deborah Block for allowing me the opportunity to play and explore. Dedicando este momento a mis abuelitas, Lupe y Severina. Las amo con todo mi corazón.



Makasha Copeland (Playwright) is a playwright, actor, and comedian. Their plays include *Extreme Home Makeover* (2019 Agnes Nixon Award, San Diego REP, Teatro Espejo, FAU Theatre Lab, Capital Rep), *Fabuloso!* (Vertigo Productions, Sideshow Theatre), and *Pitbull’s B-Day* (The Tank). Most recently, they co-created, co-wrote, and performed in sketch-improv-play fusion *Madre Mía/Minha Mãe* through Ars Nova’s 2020 Camp residency. Currently, they are working on their splits for their next project,

STDYCD: So The Dance, a dance-first, comedy-second spectacle at Ars Nova. Makasha is a member of sketch and improv teams Resting Witch Face (iO, Second City) and Social Studies (Brooklyn Comedy Collective). They graduated from Northwestern University with a degree in Theatre and Latiné Studies, where they performed, wrote, and improvised with The Titanic Players, Griffin’s Tale, Mee-Ow, and Out Da Box.



Deborah Block (Director & Theatre Exile’s Producing Artistic Director) has been a consistent figure in the Philadelphia arts community for over 30 years as a director, dramaturg, producer, curator, choreographer, and educator. Deborah has been with Theatre Exile since 2006 and assumed the position of Producing Artistic Director in 2013. Prior to that, she was one of the founding organizers of Philadelphia Live Arts Festival and Philly Fringe (now FringeArts) and was program director for ten

years. She received her MFA at Temple University where she taught for nine years. Prior to that, she taught at Rowan University, University of the Arts, and was a teaching artist in many K-12 programs. She has received much recognition for her professional and educational work including receiving the Independence Fellowship in the Arts and the Albert Benzwie Award

CAST & CREW

for playwriting. She is currently on the board of Theatre Philadelphia and has sat on many local and national panels. A sampling of her previous affiliations includes Brat Productions, Theatre Ariel, Philadelphia Young Playwrights Festival, The Wilma Theatre, and the CEC. She has worked on over 50 professional productions. For Theatre Exile, she has directed *Babel*, *Among the Dead*, *Sing the Body Electric*, *Guards at the Taj*, *Smoke*, *Red Speedo*, *Cock*, *The English Bride*, *Gruesome Playground Injuries*, *Iron*, *Hunter Gatherers*, *dark play or stories for boys*, *Roosters* and collaborated on *Heart & Soles*.

Nic Labadie-Bartz* (Stage Manager) is a freelance stage manager based in Philadelphia. In addition to their work with Theatre Exile, they are an associated artist with Applied Mechanics, and work regularly with them, The Bearded Ladies, and Nichole Canuso Dance Company. They have also worked with Pig Iron Theatre Company, Headlong, Ninth Planet, New Paradise Laboratories, Orbiter 3, Cursed Church Theatre, Stephanie Blythe, MJ Kaufman, Mary Tuomanen, Annie Wilson, Michael Kiley, Suli Holum, and Martha Stuckey, among others.

Molly Norris* (Stage Manager) is making her Theatre Exile debut. Other: In 8 seasons with the Oregon Shakespeare Festival: Production Stage Manager, *Bring Down the House, Part I*, *How to Catch Creation*. Assistant Stage Manager, *Bring Down the House, Part II*, *Othello*; *Manhatta*; *Julius Caesar*; *Hannah and the Dread Gazebo*; *The Yeomen of the Guard*; *The Wiz*, and many more. Production Stage Manager, *Othello* (American Repertory Theater). Stage Manager, *Men On Boats* (Tantrum Theatre). Stage Manager: *A Little Bit of Death* (Long Wharf Theatre). Stage Manager, Ashland New Plays Festival. Proud member of Actors' Equity Association.

Lian Brody (Assistant Stage Manager & COVID Safety Manager) is excited to work on their second production with Theatre Exile! They have stage-managed for Philadelphia Young Playwrights, Temple University Theaters, and Philadelphia Theatre Company's now-disbanded ActOut Summer Camp program where they got their start in theatre working on devised projects with Philadelphia teens in 2013. Lian is interested in new plays, devised work, queer theatre, and drag artistry. When not working as a stage manager, they can be found drawing up tattoo designs and attending or performing in local drag shows. Thanks to Addy, Ollie, Jamie, Justine, and Kimba for their love and support!

Michael Hamlet (Master Electrician) DeSales University, class of 2011. Villanova Theater ME since 2013. Wilma Theater ME since 2017, Electrician since 2012. Love to Lauren, my parents, the Group, Stass, and the Committee: Ali, D-rak, Erick, George, Jacks, John, Nicole, Steph, and Sydney. Thanks to Jerry, Maria and Drew.

CAST & CREW

Nat Merrill (Production Manager) is a sound and technology designer and engineer excited to be working on their second show with Theatre Exile! Based in Philadelphia, they have been the sound designer for productions at Bryn Mawr, Haverford and Swarthmore, including *Fucking A*, *Riot*, *Antigone*, and *Cabaret*. Professionally, they have worked with New Century Theatre Company in Seattle and the Williamstown Theatre Festival. A recent graduate of Haverford College with a major in physics, they researched and wrote a thesis on acoustics in performance halls with RWTH Aachen University in Aachen, Germany. They are also a singer and composer.

Colin McIlvaine (Scenic Design) Colin is a Philadelphia-based, Barrymore nominated scenic designer named as one of American Theatre Magazine's 20 People to Watch. Recent credits include: *St. Joan* (Delaware Theatre Company), *Salt Pepper Ketchup* (Interact Theatre), *Among the Dead* (Theatre Exile). Colin's recent associate design credits include: *A Christmas Carol* (Guthrie Theater), *Le Roi Arthur* (Bard SummerScape), *Pipeline* (Lincoln Center). In addition to his freelance career, Colin is adjunct faculty for Villanova University and The University of the Arts. B.A. University of Maryland; MFA Scenic Design Temple University. www.colinmcilvaine.com

Drew Billiau (Lighting Design) is a freelance lighting designer based in the Philadelphia area. Recent designs include *Cycle of My Being* and *The Drama of Tosca* for Opera Philadelphia, *The Electric Philadelphia* mural in Old City, *Sunset 0639 Hours* for BalletX and the gallery lighting for *Blood Moon* at The Fabric and Textile Workshop. Drew has designed numerous shows for such companies as Edinburgh Fringe Festival, Jacobs' Pillow, New York Theater Workshop, The Joyce, Vail International Dance Festival, Opera Philadelphia, Vancouver Opera, BalletX, Pennsylvania Ballet, Wilma Theater, Portland Ballet, Lucidity Suitcase, New Paradise Laboratories, Theater Exile and The Lantern Theater. Art installation designs include - The Electric Street, Electric Toronto, Electric Alley, Phoenix Desert Botanical Gardens and the Los Angeles Ice Cream Museum. Drew is currently the Director of Design & Technology at Opera Philadelphia and an Associate Designer with the corporate/industrial lighting firm Fine Design Associates, Inc.

Ariel (Liudi) Wang (Costume Designer) is a freelance Costume Designer and Makeup Designer. She came to the U.S. from Beijing, China for graduate school and achieved her MS in Communication Management and MFA in Costume Design at Temple University. Her recent credits include Costume Designs for *Babel*, *Among the Dead*, and virtual production of *D-Pad* at Theatre Exile, *The Chinese Lady* at InterAct Theatre Company, *Sunset Baby*, *Ready Steady Yeti Go* at Azuka Theatre, *Natural Shocks* and *Cry It Out* at Simpatico Theatre, *The Weir and Medea* at Hedgerow Theatre, *A Hundred Words for Snow* at Inis Nua Theatre Company, Original devised play, *In America: That is to Say Nowhere*, at Rowan University, and *Our Town* and *The Odyssey* at Temple University. See more of her design works at www.arielwangld.com

CAST & CREW

Mark Valenzuela (Sound Designer) has been working as a Sound Designer and engineer for live performance since 2005, and last designed for Theatre Exile back in 2015 on *Who's Afraid of Virginia Woolf?* Other credits include 11th Hour Theatre Co, Pig Iron, Lantern Theatre Co, Theatre Horizon, 1812 Productions, DTC, InterAct Theatre Co, Act II Playhouse, Milwaukee Rep (Milwaukee WI), Vail Dance Festival (Vail, CO), UArts, and Villanova, Temple, Drexel and Arcadia Universities. In 2019 he traveled to the Edinburgh Fringe Festival as Sound Designer and engineer with the #213 Collective.

Avista Custom Theatrical Service (Props Designer) owned by Jennifer Burkhart and Amanda Hatch, was founded in 2007. Avista specializes in prop construction, upholstery, drapery and other soft goods construction, and maintains a 10,000 square foot rental warehouse in Norristown. Avista's prop master and design work has been seen locally at Opera Philadelphia, Azuka Theatre, Drexel University, Temple University, Maunkingbird Theatre, EgoPo Classic Theater, Theatre Exile, Inis Nua Theater, and Kimmel Center Education Department. Avista is especially grateful to be back in the theater scene this year, after 18 months of sewing face masks and dog accessories! Welcome back, Philly theater! www.avistacustom.com

Noelani Montas (Assistant Scenic Designer) is in her final semester as a Theater Design and Technology major at University of the Arts, and is focusing in set and lighting design. Recent UArts credits include: *Pippin* (Co-Set Design), *Elliot: A Soldier's Fugue* (Production Design), *Pop! The Musical Exhibition* (Production Design), and *Momentos* (Ensemble). She is a recipient of the 2021 Pat Mackay Diversity in Design Award, and is also a lighting design mentee in the 2021-2022 Wingspace Mentorship Program. E holomua.

Flannel and Hammer (Scene Shop) is a Philadelphia-based business. The company was founded by Lauren Tracy (Flannel) and Joe Daniels (Hammer). With over 10 years' experience and 100 productions under their (tool) belts they have the knowledge and skills to bring any scenic construction to life. Their work can be seen onstage here and at Inis Nua, Shakespeare in Clark Park, Azuka Theatre and EgoPo Classic Theater. Beyond the stage they also create custom furniture pieces for your home. See more of our work here at www.flannelhammer.com.

Theatre Exile is dedicated to enhancing the cultural experiences of Philadelphians through the staging of works that engage the imagination. Founded in 1996 by Joe Canuso and Trish Kelly, Theatre Exile was created by a group of artists that explore the complexities of the human condition packed with Philadelphia grit and passion. Exile is the first Philadelphia organization to produce such powerhouse playwrights as Tracy Letts, Lucas Hnath, Annie Baker, Rajiv Joseph, Rona Munro, and Hansol Jung among others. In 2016, Exile was named most fearless theatre by Philly Currents and Best Theatre Company by Philadelphia Magazine. Exile received 92

CAST & CREW

Barrymore nominations, with 19 awards. In 2017, Theatre Exile left their home to begin a new phase in Exile's life. Following her idea to create a new home in their old location in South Philadelphia, Deborah Block with the Board of Directors collaborated with Center City Development and Cecil Baker + Partners, and created a vision for a new theatre that honors the art and maintains Exile's goals of working in an intimate and flexible environment. They produced their first play in the new theatre in February 2019 and moved their office to the new space in April 2019.

Actors' Equity Association (AEA) was founded in 1913 as the first of the American actor unions. Equity's mission is to advance, promote and foster the art of live theatre as an essential component of our society. Today, Equity represents more than 40,000 actors, singers, dancers, and stage managers working in hundreds of theatres across the United States. Equity members are dedicated to working in theatre as a profession, upholding the highest artistic standards. Equity negotiates wages and working conditions and provides a wide range of benefits including health and pension plans for its members. Through its agreement with Equity, this theatre has committed to the fair treatment of actors and stage managers employed in this production. AEA is a member of the AFL-CIO and is affiliated with FIA, an international organization of performing arts unions. For more information, visit www.actorsequity.org.

CELEBRATE OUR ANNIVERSARY SEASON WITH US
as we continue move forward with a bold vision
for the future of theater,

showcasing work with
Philadelphia grit, and passion.
We can only do this with your
partnership and support.

**PLEASE MAKE A SUSTAINING
DONATION TODAY!**

venmo



**Please include your first and last name as you would like to be acknowledged
in the comments of your digital donation.**

SUPPORTERS

We would like to give an extra special thanks to the foundations, corporations and individuals whose generosity supports our work. (This list includes gifts received from July 1, 2020 - October 8, 2021)

Corporations

Brandywine Realty Trust & Jerry Sweeney
The Brothers' Network
Dell Giving
En Route
Flim Flam Film
Fox & Dog, LLC.
Network For Good
Quaker Printing Group
Southern Land Company,
Developers of 1911 Walnut & Tim Downey
Stark & Stark, Michael Donahue
The Victor Cafe

Foundations & Government

The Blackburn Giving Fund
Bridge Program: National New Play Network
Christopher Ludwick Foundation
Commonwealth of Pennsylvania
Estate of Pearl M. Carpel
Independence Foundation
JMC Fund
The Lida Foundation
Paul E. Kelly Foundation
Pennsylvania Council on the Arts
The Philadelphia Cultural Fund
The Shubert Foundation
Stockton Rush Bartol Foundation
Suzanne Roberts Cultural Development Fund
United Way of Greater Philadelphia & Southern NJ
Venturous Theater Fund,
a fund of Tides Foundation
William K. Stewart Sr. Foundation
William Penn Foundation
June & Steve Wolfson Family Foundation
Wyncote Foundation

Society of Exiles

Dana Ash
Jennifer & David Cardy
Fern & John Culhane
Robert M. Dever
Maria Gallagher & Ray Didingar
Anna Maria & Rich Di Dio
Alison Ezell
Linda & David Glickstein

Society of Exiles

Barbara & Steve Gold
Joni Marcus & Eddie Greves
Susan & Edward Hoffman
Sarah Hoskins
Annabelle Jellinek
Paul E. Kelly
Marta & Bill Kiesling
Peg & Michael Kramer
Robin Sakina & Saifuddin Mama
Gene Gualtieri & Mary McManus
Michael Donahue & Alex Moede
Fran & Kathy Murphy
Desiree Salera & Eric Okdeh
Michael Wax & Christine Frost Red
Michael Phillips & Sue Rock
Alycia & Tom Scannapieco
Andrew & Bryna Scott
David & Gayle Smith
Reuben Wade & Janice Smith
Deborah Block & Doug Smullens
SaraKay & Stanton Smullens
Margaret Harris & Phil Straus
Lee & Christopher Van De Velde
June & Steve Wolfson

\$500-\$999

Anonymous
Karen & Mark Belding
In Memory of Gene Bishop
Tobey & Mark Dichter
Erica & Matt Ezold
Leila Ghaznavi
Christopher Anastasiou & Mitch Gillette
Brett Mapp & Morgan Hugo
David & Beth Medoway Kagan
Lynn Marks & Clifford Pearlman
Pam & Gresham Riley
Kathyanne Cohen & Adam Schless
Dr. Jeffrey Sorkin
Barbara & James Sterchele
Joe & Rachel Stern
Julie & Pete Stern
Gregory Walker
Diane Dalto & Richard Woosnam

SUPPORTERS

\$100-\$499

Anonymous
Kim & David Adler
Dirk L. Allen
Sarah Anton
Sandra & Jamie Arnold
Georgia & Barrie Ashby
Harry F. Bambrick
Sally & Mo Barron
Carol Beam
Daniel & Susan Behrend
Michael Hollinger & Megan Bellwoar
Deanne Bennett
Jay & Nancy Berkowitz
Marie, Angela & Sanniyah Bey
Daniel Boylen
Dorothy Brown
Marian & John Bumbaca
Marie Burdett
Charles Burns
Katie & Bryan Clark
Carol Cook
Heather Coyne
Jimmy Crowley
Donna Hunt & Chris Deephouse
Robert DiSerafino
John & Lois Durso
David Ingram & Melanye Finister
Dr. Judith Finkel
Susan & James Fiordeliso
Marc Fischer
Patricia Forcina
Vincent E. Fumo
Nancy Geryk
Joanne Bursich & Randy Giancaterino
Mike Hagan
Liza Herzog
Ralph & Natalie Hirshorn
Eileen O'Brien & Samuel Hopkins
Margot & Ellis Horwitz
Sterling & Deena Johnson
Judy Kaplow
Ellen Heber-Katz
Sam Katz
Nancy Boykin & Dan Kern
Ken Kesslin
Michael Lampson & Min-Young Kim
Christina Kind
Elliott Korsen

\$100-\$499 contd.

Valerie Koscelnik
Carolyn Schlecker & Bob Kosseff
Myra Kranzel
Allen J. Kuharski
Elisabeth & Russ LaMotte
Eva & Michael Leeds
Rebecca Levine
Natalie Levkovich
Cirel & Howard Magen
Jeffrey Brown & Sandee Mandel
Diane Cribbs & Arthur Mann
Linda & David Marder
Shara Neidell & Carlos Martin
Michael McCaney Jr.
Ray Costello & Deb Miller
Maureen Barden & David Othmer
John & Judith L. Peakes
David Bushnell & Kimberly Pelkey
In Memory of Karen Pressel
Renée Rollin
Laurie & Steven Rosard
Murray Dubin & Libby Rosof
Anisa George & Dan Rothenberg
Barbara & Dan Rottenberg
Domenic Sanginiti
Eric Schaeffer
Stephen Platt & Robin Schaufler
Elana Benamy & Ray Scheinfeld
Raymond Scheinfeld
Ruth Septee
Robert & Pamela Shaw
Beverly Short
Charlotte Shuman
Gail Sidewater
Corey & Jonne Smith
William & Darlene Smith
Davida Grossman & John Spencer
Margaret Spencer
Rachel Harr & Keith Stallone
Bert & Lynne Strieb
Natalie Huguet & Frank Trommler
Karen Lichter & Ron VanLangeveld
Michael Norris & Matt Varrato
Anne & Edward Wagner
Robert Wallner
Maria Werner-Wasik
Mary Goldman & Debbie Weiner
Jacqueline Weitzner

SUPPORTERS

\$100-\$499 contd.

David Cramer & Christine Wiita
Bob Weinberg & Eleanor Wilner
Pam & Ed Zenzola
Mark Knight & Grace Ziegling

\$10-\$99

Anonymous
Patreshettarlini Adams
Cassie Alexander
Diana Altegoer
Carl A. Anderson
Bev Appleton
Fran & Bernadette Baird
Pamela Barnett
Brey Ann Barrett
Kathleen Barry
Michael Bartz
Alyvia Beaudion
Benjamin Behrend
Nancy Bell
R Beschler
Valerie Blassey
Libby Harwitz & Burton Blender
Dennis Bloh
Barry Brait
Jean Brody
Joan Butler
Evren Cakir
Timothy Carey
Liam Castellan
Denise Cavaliere
Corey Chao
Leslie Chapman
Gabrielle Corsaro
Mary Cugini & Kathleen Daniels
Sarah Darrow
Greg Deatz
T. J. Deluca
Rondell Dennis
Robert Dilullo
Amanda Distefano
Kimiko Doherty
Jay Donner
James Doolittle
Katherine Douglas
Katharine Dunlevy
Debbie Shapiro & Kevin Dunphy
Neil Durkin
Dane Eissler

\$10-\$99 contd.

Nicole Erb
Nancy Eshelman
Nena Eskridge
David & Molly Espey
Susan Feagin
M.J. Fine
David Finger
Lana & Ralph Fishkin
Charles Flemming
Juliana Flower
Judi Forman
Jennifer Fouche
Donald Friedman
Ivan Fuller
Dr. Kevinjohn Gallagher
Alima Abdul-Ghany
Stan Gibell
Tanya Gidaro
Sybil Gilmar
Kevin Glaccum
Bill Goldberg
Janet Goldwater
Louis Greenstein
Michael Greer
Grace Grillet
Margaret Gripshover
Terry & Paul Guerin
Karen Wrigley-Haak
Howard Herman-Haase
Lauren Hallenbeck
George Harding
Pier Hart
Kevaughn Harvey
Jean Haskell
Harriet Power & Bob Hedley
Mickey Herr
Rochelle Hight
James Mcclory & Deborah Hoellein
Merle Lee Holman
Pippa Howard
Anne & Tim Hunter
Michael Ippoliti
Judy Adamson & Fred Jackes
Willa Jaffe
Brianna Johns
Carol Orme-Johnson
Janet Johnson
Jessica Johnson
Noelle Johnson

SUPPORTERS

\$10-\$99 contd.

Gina Kaiser
Dorilona Rose & Michael Kay
Jacob Kelbernan
Joe Kelly
Leonard Kelly
Eric Knight
Gregg Henry Kohlhepp
Emily Kowaleski
Leland Kowalski
Alisa Kraut
Marilyn Kraut
Rebecca Kraut
Darren Lacroix
Paula Cramer & Warren Laddon
Melanie Leeds
Kelsey Leljeda
Ruthie Levikoff
Joseph Lex
Gregory & Dr. Cynthia Line
Margaret H. Lonsetta
Bruce Love
Benjamin Lovell
Hannah MacLeod
Ida B. Malloy
Shira & Alan McCormick
Jessica Meek
Michelle Mei
Jonathan Meyers
Peter Miraglia
Carolyn Miron
Ross Mitchell
Richard Moberg
Timothy Moir
Jessica Money
John Mullany
Denise M. Mullin
Bill Gehrman & Christopher Mullins, Jr.
Lisa Myers
Jennifer Nehilia
Pamela Nelson
Justin Ngo
Charlene Nolton
Sheri Ozard
Cathy & Frank Pfeiffer
Mary Pipan

\$10-\$99 contd.

George R.
Linda Rappaport
Carol Saline & Paul Rathblott
Bill & Rosemarie Reynolds
Kenneth Richman
Marion Rizzo
Amina Robinson
Robin Rodriguez
Hal & Sue Rosenthal
Robert Ross
Judith & Ed Ruback
John Rudolf
Carole H. & Irwin C. Saft
Garabed Sarkessian
Thiago Scabbia
Grace Gonglewski & Eric Schoefer
Denise Scobee
Margret Seiler
Rachel Rose Shalev
Margaret Shapiro
Robert Sharrar
Ellen Sleeter
Elle Smith
Kristyn Chouiniere Smith
Heather Speirs
Blanche & George Steele
Erica Stefanovich
Dr. Dean Steinberg
Diane & Richard Steinbrink
Charles Sutphen
Shawn Sweeney
Rochelle Taylor
Tiffany Threadgould
Phaedra Tinder
Paule Turner
Sharon Ullman
Barbara Watson
Anne Weiss
Cynthia Weiss
D D Wigley
Adrena Williams
Sisi Wright
Sarah Yeung
Bob Young
Caroline Young
Anita Zippert

THEATRE EXILE STAFF

Deborah Block.....	Producing Artistic Director
Anne Marie Cammarato.....	Grant Writer
Denise Cavaliere.....	Director of Individual Giving
Katherine Desimine.....	Box Office
Edgimo.com.....	Web Design
Rodrick Edwards.....	Box Office & Vaccination Record Checker
Kyleen Goode.....	External Relations Associate
Jamie Hafner.....	Intern
Nikki Hagedorn.....	Graphic Designer
TS Hawkins.....	Education Director
Randi Alexis Hickey.....	Administrative Assistant and House Manager
Nickolette Jones.....	Box Office & Vaccination Record Checker
Nat Merrill.....	Production Manager
Sebastienne Mundheim.....	Producer and Project Manager, Out of Exile Program Director
Andrew Nelson.....	IT Specialist
Matt Pfeiffer.....	Artist-In-Residence
En Route.....	Marketing
Carolyn Schlecker.....	Operations Consultant
Autumn Valdez.....	General Manager

BOARD OF DIRECTORS

Executive Committee

Desiree Salera, Chair
Sterling Johnson, Vice Chair
Francis Murphy, Treasurer
Alison Ezell, Secretary

Board Members

Deborah Block
Michael Donahue
Brett T. Mapp
Bryna Scott
Dr. Jeffrey Sorkin
Reuben Wade

Exile Advisors & Committee Members

Ken Bingham
Robert Dever
Patricia Forcina
Vincent E. Fumo
Anne Gemmell
Tom Harmaty
Liza Herzog
Sharon Hoffberg
Shirley Lockwood
Doug Smullens

Founders

Joe Canuso and Trish Kelly

SPECIAL THANKS

Doug Smullens
Cabot Creamery
Favors & Flavors

COMING SOON

2021-22

theatre exile

WORKSHOP SERIES

Restorative Healing

(for Actors/Performers/Writers) with TS Hawkins

Saturday December 4, 11 a.m. to 12:30 p.m.

Fine-tune your creative skillset with Theatre Exile's Education Director, TS Hawkins!

*Certificate of Completion provided to attendees.

Restorative Healing

(for Directors/Stage Managers/Dramaturgs/Choreographers)

with Noelle Johnson

Saturday December 11, 11 a.m. to 12:30 p.m.

Upgrade your practical and accessibility tools with Noelle Johnson & Artists Heal™!

*Certificate of Completion provided to attendees.



10th

10th Floor Productions
Innovation Meets Collaboration

We are a team of skilled and dedicated artists committed to providing a variety of design and technical services to make your project breathtaking.

*Website: www.10thfloor.live
Contact: 10thFloorProduction@gmail.com*