

ZOO MOTEL

A LIVE CINEMATIC THEATRE PLAY by THADDEUS PHILLIPS.
DESIGNED by STEVEN DUFALA.

PRESENTED BY
theatre exile



ESCAPE YOUR EXILE

RAFFLE

READY TO GET OUT OF EXILE? Escape Your Exile with a Luxurious Getaway!

ALL PROCEEDS BENEFIT THEATRE EXILE.

Purchase a ticket for a chance to win a dream getaway at the beautiful Woodloch Resort in the Pocono Mountains. Less than a three-hour drive from Philadelphia, this top-rated, exclusive resort has spacious accommodations in a variety of locations to choose from, including lodge, hotel, and private bungalow settings.

ONLY 100 TICKETS WILL BE SOLD FOR \$100 EACH, GIVING YOU A FANTASTIC CHANCE TO WIN A PRIZE PACKAGE WORTH \$2,500!



PLUS, the winner can choose their Woodloch Resort personalized package:

SPA GETAWAY at The Lodge at Woodloch

FAMILY GETAWAY at The Woodloch Pines Resort

GOLF GETAWAY at The Woodloch Springs Resort

The prize package includes dozens of activities, abundant resort amenities, nightly entertainment, 1,500 acres to play in, and 2-3 meals daily, per person (dine-in or take out).

The raffle drawing will be held in May 2021 at our Cabaret of the Exiled virtual event. Tickets will be sold until the night of Cabaret of the Exiled or until 100 tickets are sold.

Raffle holders do not need to be present at the Cabaret.

ZOO MOTEL

A LIVE CINEMATIC THEATRE PLAY by THADDEUS PHILLIPS.
DESIGNED by STEVEN DUFALA.

PRESENTED BY theatre exile

CAST

Thaddeus Phillips

Co-created & Directed by Tatiana Mallarino

Magic by Steve Cuiffo

Movement by Fernando Careaga and Katya Humenyuk

Night Clerk
Newton Buchanan

"Miami Light Project first presented ZOO MOTEL in September of 2020"

YOU CAN SUPPORT
theatre exile
FROM YOUR SEAT.

Just text "exile" to the number 243725
to make a tax-deductible donation.

Thank you for your support!

CAST & CREW



Thaddeus Phillips is a Colorado native who directs theater in Europe, tours with his own work globally and moonlights on TV. Created works include: *17 Border Crossings*, *Red-Eye to Havre de Grace*, *Inflatable Space*, *A Billion Nights on Earth*, *Capsule 33*, *Lost Soles*, *Whale Optics*, *The Earth's Sharp Edge*, *The Melting Bridge*, *King Lear*, *The Tempest*, *Henry 5 Live from Times Square* and *The Incredible . . . Adventures of Barry Seal*. His work has been presented and commissioned by NYTW, BAM Next Wave Festival,

Barrow Street Theater, Territory Festival (Moscow), The Broad Stage (Santa Monica) Hong Kong Festival, Buntport Theater (Denver), The Mat, Sibiu International Festival, Miami Light Project and many other cities. Recent directing includes 3 productions for Teateri (Sweden), and Antropoceno for Teatro La Abadia (Madrid). He is a Pew Fellow, A Doris Duke Artist Award recipient, and appeared in *Narcos* and one of the *Spider-Man* films.

Website: ThaddeusPhillips.com.



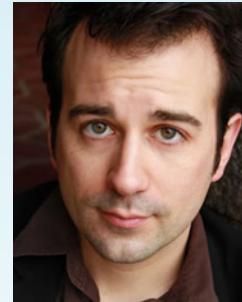
Steven Dufala (Designer) is a multidisciplinary artist based in Philadelphia and works primarily in collaboration with his brother Billy as the Dufala Brothers. Steven has been working intermittently with dance and theatre as a designer for about 20 years, and over this time has worked with Geoff Sobelle designing *HOME & The Object Lesson*, Pig Iron Theatre Company, BalletX, and anonymous bodies. With his brother Billy, he received an Obie Award for design with rainpan 43's *machines machines machines machines*

machines machines machines, and shared a Bessie award with the entire design team for Geoff Sobelle's *The Object Lesson* in 2015. Steven and Billy co-teach sculpture at the Pennsylvania Academy of the Fine Arts and are represented by the Fleisher/Ollman gallery in Philadelphia. Their work is in the collection of the Philadelphia Museum of Art, the Pennsylvania Academy of the Fine Arts, the West Collection and many private collections.

CAST & CREW



Tatiana Mallarino (Co-Creator & Director) directed *17 Border Crossings* & *iEl Conquistador!* at NYTW, played Leila Khaled in Lucidity's *The Earth's Sharp Edge*, served as dramaturg for LSI's *Whale Optics*, *The Melting Bridge*, *Lost Soles*, *Henry V*, and *Barry Seal* projects and served as the dialogue coach for Javier Bardem and Penelope Cruz for *Loving Pablo*. She has performed at La Mama Etc, Bunport Theater in Denver and directed a puppet version of *The Tempest* at the Arcola Theatre in London. She teaches emotional intelligence.

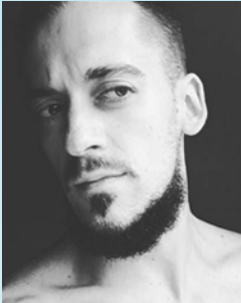


Steve Cuiffo (Magic) is one of the leading sleight-of-hand artists in New York City and creates unique performance, art, theater and magic. He has performed with The Wooster Group, worked with David Blaine, played Lenny Bruce onstage and is a member of The Elephant Room. *ZOO MOTEL* is his first collaboration with Thaddeus Phillips.



Newton Buchanan (Night Clerk) is a performer and theatre producer based in Philadelphia, Pennsylvania. He is a co-founder of New Light Theatre Company. New Light is dedicated to illuminating the human condition and providing opportunities for emerging young theatre artists to work in a professional setting. He is a co-founder of the newly formed Black Theatre Alliance of Philadelphia. BTAP's mission is geared toward the elevation and advocacy of black theatre artists in the Philadelphia area. He currently holds an associate artist position with Delaware Shakespeare Co, where he devises continued educational and performative programming. He's also the Director of Customer Experience with Markee, a virtual events platform centered on customers owning their own space.

CAST & CREW



Fernando Careaga (Movement) is a dancer, creator and musician from a Spanish enclave in North Africa. He dances on Saturday nights underneath a McDonalds at Nevas Ministeros in Madrid. He composed the original music for *Antropoceno* at Teatro La Abadia.



Katya Humenyuk (Movement) is a Ukrainian born dancer based in Spain. She played Greta Thunberg in Teatro Albadia's *Antropoceno* and can also be found on Saturday nights doing contact improv at under the mall at Nuevos Ministerios.

Theatre Exile is dedicated to enhancing the cultural experiences of Philadelphians through the staging of works that engage the imagination. Founded in 1996 by Joe Canuso and Trish Kelly, Theatre Exile was created by a group of artists that explore the complexities of the human condition packed with Philadelphia grit and passion. Exile is the first Philadelphia organization to produce such powerhouse playwrights as Tracy Letts, Lucas Hnath, Annie Baker, Rajiv Joseph, Rona Munro, and Hansol Jung among others. In 2016, Exile was named most fearless theatre by Philly Currents and Best Theatre Company by Philadelphia Magazine. Exile received 92 Barrymore nominations, with 19 awards. In 2017, Theatre Exile left their home to begin a new phase in Exile's life. Following her idea to create a new home in their old location in South Philadelphia, Deborah Block with the Board of Directors collaborated with Center City Development and Cecil Baker + Partners, and created a vision for a new theatre that honors the art and maintains Exile's goals of working in an intimate and flexible environment. They produced their first play in the new theatre in February 2019 and moved their office to the new space in April 2019.

THEATRE EXILE STAFF

Brey Ann Barrett.....	Interim Associate Artistic Director
Deborah Block.....	Producing Artistic Director
Anne Marie Cammarato.....	Grant Writer
Denise Cavaliere.....	Director of Individual Giving
Brenden Dahl	Virtual Intern
Edgimo.com.....	Web Design
Kyleen Goode.....	External Relations Associate
Nikki Hagedorn.....	Graphic Designer
TS Hawkins.....	Education Director & Virtual Patron Support
Randi Alexis Hickey.....	Virtual Patron Support
Sebastienne Mundheim.....	Out of Exile Program Director
Andrew Nelson.....	IT Specialist
Matt Pfeiffer.....	Artist-In-Residence
Carolyn Schlecker.....	Operations Consultant
Evelyn Swift Shuker.....	Production Manager
Autumn Valdez.....	General Manager
En Route.....	Marketing

BOARD OF DIRECTORS

Executive Committee

Desiree Salera, Chair
Sterling Johnson, Vice Chair
Francis Murphy, Treasurer
Alison Ezell, Secretary

Board Members

Deborah Block
Michael Donahue
Brett T. Mapp
Betsy Oliphant Ross
Bryna Scott
Dr. Jeffrey Sorkin
Reuben Wade

Committee Members

Ken Bingham
Robert Dever
Patricia Forcina
Vincent E. Fumo
Maria Gallagher
Anne Gemmell
Shirley Lockwood
Doug Smullens

Founders

Joe Canuso and Trish Kelly