



# THE LIGHT

by **LOY A. WEBB**

**DIRECTED BY J. PAUL NICHOLAS**

ASSOCIATE PRODUCERS: GAYLE and DAVID SMITH

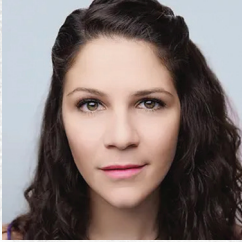
**PHILADELPHIA PREMIERE**

**FEBRUARY 2 - FEBRUARY 26, 2023**

**theatre exile**

# STUDIO X-HIBITION

Three Readings of  
Three New Plays of  
Three Exciting Stories by  
Three Local Playwrights



*Trying*  
**by Alison Scaramella**  
Monday April 10th, 2023

Maggie and Jamie have been trying to have a baby for... a while. After a recent loss, they are getting back on the not-so-sexy horse, navigating lots of peeing on sticks, friends with babies, and unsolicited advice on their path to building their family.



*Without Consent*  
**by David Robson**  
Monday May 8th, 2023

Carmen, the wife of an entertainment legend, is interviewing a nurse, Lisa, to supervise the care of her ailing husband, but the tables quickly turn as Carmen is confronted with sexual accusations against her husband and with her complicity in the alleged incidents.



*Honey Bee Baby*  
**by Erlina Ortiz**  
Monday June 12th, 2023

*Honey Bee Baby* takes place in the plausible future when the Bees are gone, the resources are scarce, and every one must earn their place in this world where the lines between right and wrong are blurred with blood.

All readings in person at 7pm

Pay what you can:





# THE LIGHT

by **LOY A. WEBB**  
DIRECTED BY **J. PAUL NICHOLAS**

---

PRODUCED BY **theatre exile** Associate Producers Gayle and David Smith

---

## CAST

---

**Ang(ela) Bey\*** ..... Genesis  
**Abdul Sesay**..... Rashad

---

## CREW

---

### Director

J. Paul Nicholas

### Dramaturg

Dr. Kimmika L. H. Williams-Witherspoon

### Set Designer

Nick Embree+

### Composer

Larry Fowler

### Assistant Lighting

### Designer/Master Electrician

Sophie Smyczek

### Stage Manager

Melody Wong\*

### Scenic Charge

Brian McCann

### Lighting Designer

Drew Billiau+

### Sound Designer/ Audio Engineer

Natali Merrill

### Intimacy Director

Eli Lynn

### ASM/COVID Compliance Officer

Miranda Watkins

### Costume Designer

Tiffany Bacon

### Props Designer

Avista Custom Theatricals

### Production Manager

Janet Embree

### Technical Director

Nick Schwasman

### Board Operator

Casie Weaver



\* Member of Actors' Equity Association,  
the Union of Professional Actors and Stage Managers  
in the United States



UNITED  
SCENIC  
ARTISTS

## NOTE FROM DEBORAH

---

Thank you for joining us for our second show of our 26th season; a year filled with hope, humor and Exile's signature grit. For those of you who have been with us previously, you know that we do not show life through rose-colored glasses nor do we select shows that offer easy answers. However, our selections show a pathway to hope and good-fortune that can be earned. Exile's version of hope shows life's rough journey, and the light that is always within reach when we care for those around us. All of our characters this season *intend* to do the right thing. But we, as witnesses, can feel the harm that is caused when their blinders hide the impact they have on others. Their stories illuminate our failings and strengths and let us find our own pathway to redemption and hope.

As the season selection team was reading and seeing plays, we became drawn to stories about family; the families we choose, the families we are trying to create, and the families that we want to repair. With that, I'm thrilled to be able to present to you *The Light* by Loy A. Webb; two people in a room, in real time, dreaming of their future while navigating painful ramifications of their past.

Thank you for your support by choosing live theater. Nothing touches me more when I am in a room with you, feeling the humanity that only live theater can evoke. It has been a challenging time for all of us in the arts and culture community. I hope that you will encourage those around you to experience the power of live performance at this tenuous time. Your support in any way is greatly appreciated.

Thank you for joining us as we all emerge from Exile.



Deborah Block, Producing Artistic Director

---

## THEATRE EXILE'S 2022-2023 SEASON IS BROUGHT TO YOU BY

---

THE  
SHUBERT  
FOUNDATION INC.

Independence  
f  
oundation

CHARLOTTE CUSHMAN  
FOUNDATION

THE  
Christopher  
Ludwick  
FOUNDATION

THEATRE  
PHILADELPHIA

Wyncote  
Foundation

tcg  
Theatre  
Communications  
Group

The Philadelphia  
Cultural Fund

WILLIAM PENN  
FOUNDATION

NATIONAL  
ENDOWMENT for the ARTS  
arts.gov

Suzanne Roberts Cultural  
Development Fund

pennsylvania  
COUNCIL ON THE ARTS  
Building stronger communities takes creativity

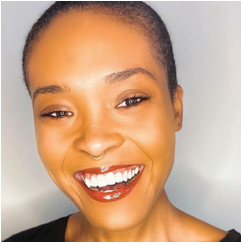


The Brothers'  
Network  
#BlackBeyondBoundaries



## CAST & CREW

---



**Ang(ela) Bey** (Genesis) is a multidisciplinary-artist from South-west Philadelphia. They are grateful to return to Exile where they performed in *D-Pad*, directed *abSolution* (Studio Xhibition), and assistant-directed *The Ever Present* and *Wolf Play*. Ang is founder of Upstream Performance Collaborative and Co-Artistic Director of Shoe Box Theatre Collective. They are a cohort member of the Echoes Writers Group (Primary Stages) and Rising Writers (Azuka Theatre). Selected credits - [design] costumes for *A Hit Dog Will Holler* (Azuka) and costumes for *The Medusa Play* (Shoe Box Theatre Collective) [acting] *Fabulation* (Lantern Theater) and *Young Money* (Azuka); [playwriting] *The Medusa Play* (SBTC), MASC. (Rising Writers), and two commissions (Christ Church Neighborhood House and Museum of the American Revolution); [directing] *The Taming!* (Shakespeare in Clark Park) and *Water By the Spoonful* (Eagle Theatre). [angbey.com](http://angbey.com). The 24-hour Philadelphia Domestic Violence Hotline is 1-866-723-3014. All calls are free, confidential and anonymous. You are believed, loved, and not alone.



**Abdul Sesay** (Rashad) is a graduate from Temple University. While pursuing a degree in Media studies and Production he often found himself hanging around Tomlinson Theater or Annenberg Hall on campus. There he would take acting classes; watch, audition and perform in plays and get to know theater students. He also got involved in the film department and developed an affinity for live and digital sketch comedy. Since graduating, he has had the opportunity to work with EgoPo Classic Theatre, Delaware Shakespeare, Theatre Ariel and Philadelphia Artist Collective and Theater in the X. He is honored and overjoyed to play Rashad in Theatre Exile's production of *The Light*.



**J. Paul Nicholas** (Director) is excited to be back home at Theatre Exile, where he has previously worked as an actor and a fight choreographer, and won a Barrymore Award for his performance in Exile's *The Invisible Hand*. He was most recently an Associate Artist with Florida Studio Theatre in Sarasota FL. His most prominent directing credits include off-off-Broadway productions of *The Merry Wives of Windsor* and *The Water Children*, and *Wittenberg and Yellowman*, both at Henley Street Theatre in Richmond VA. As an actor, Paul has worked at

## CAST & CREW

---

**J. Paul Nicholas, cont.** theaters all over the country, and appeared in 8 network TV series, including *Mare of Easttown* opposite Kate Winslet. He is currently playing NYPD Detective Mike Adams on *FBI*. Paul has an MFA from The Academy for Classical Acting at GWU, and is also a proud member of the Lincoln Center Theater's Directors Lab. Please visit [www.jpaulnicholas.com](http://www.jpaulnicholas.com)

**Nick Embree** (Scenic Designer) is very pleased to join Exile's team for his first show here! He has designed sets for 150+ productions in Philadelphia and the region - most recently *Travesties* for Lantern Theater Company. Nick is an Associate Professor in the University of the Arts' Theater Design and Technology program, which he initiated in 2004. He also serves as co-head of UARTS' Film Design Program. Nick is a member of USA 829.

**Tiffany Bacon** (Costume Designer) is a known Philadelphia radio personality and actress who officially began her costume design journey in 2003. Tiffany can be heard on WURD 96.1FM and Classic 107.9FM. Ms. Bacon is the founder of Mo'Tiff Designs, named for "more things that Tiff does" and for its literal definition (a distinctive feature or dominant idea in an artistic or literary composition). Mo'Tiff costume work appeared in *Gem of the Ocean* (The Arden Theatre) (Understudy Run Only); *Purlie Victorious* (Allens Lane Theater), August Wilson's *The Piano Lesson* (The Steel River Playhouse) *The Colored Museum* and *The Prince of Nubia* (Theatre in the X) *Egoli & Master Harold & The Boys* (EgoPo Classic Theatre) *The Little Princess* (Quintessence Theatre) *Trouble in Mind* (Philadelphia Artists' Collective) and Dauphin Island (Passage Theatre).

**Drew Billiau** (Lighting Designer) is a freelance lighting designer based in the Philadelphia area. Recent designs include the Samsung booth for the Consumer Electronics Show, *Travesties* for Lantern Theater, *Rigoletto* for Opera Philadelphia, *Death of A Driver* for Interact Theater and the gallery lighting for *Blood Moon* at The Fabric and Textile Workshop. Drew has designed numerous shows for such companies as Edinburgh Fringe Festival, Jacobs' Pillow, New York Theater Workshop, The Joyce, Vail International Dance Festival, Opera Philadelphia, Vancouver Opera, BalletX, Pennsylvania Ballet, Wilma Theater, Portland Ballet, Lucidity Suitcase, New Paradise Laboratories, Theater Exile, 1812 Productions and The Lantern Theater. Art installation designs include - *The Electric Street*, *Electric Toronto*, *Electric Philadelphia*, *Phoenix Desert Botanical Gardens* and the *Los Angeles Ice Cream Museum*. Drew is currently the Director of Design & Technology at Opera Philadelphia and an Associate Designer with the corporate/industrial lighting firm Fine Design Associates,inc.

## CAST & CREW

---

**Natali Merrill** (Sound Designer) is a sound and technology designer and engineer excited to return to Theatre Exile! Based in Philadelphia, she has been the sound designer for productions including *Spring Awakening* (Bryn Mawr College), *High Noon* (Ninth Planet), Shakespeare's *R&J* (New Light Theatre Company), *Fucking A* (Swarthmore College), *Riot Antigone* and *Cabaret* (Haverford and Bryn Mawr Colleges). She has worked with Theatre Exile, 11th Hour Theatre Company, the Bearded Ladies Cabaret, New Century Theatre Company in Seattle, and the Williamstown Theatre Festival. A graduate of Haverford College with a major in physics, she researched and wrote a thesis on acoustics in performance halls with RWTH Aachen University in Aachen, Germany. She is also a singer and composer. [www.nmerrill.com](http://www.nmerrill.com)

**Larry Fowler** (Composer) is a Philadelphia based theater sound designer, radio imaging producer and music producer whose work spans over 20 years. Theater companies Larry has designed for include Arden Theater, Wilma Theater, Azuka Theater, Interact Theater, Theater Horizon, People's Light, New Paradise Labs, Simpatico, Theater Exile, The Lantern Theatre, Denver Center, Trinity Rep, ELeon Dance, Danse4Nia and Khaleah London Dance. He is a three-time Barrymore Award nominee for his work on *Blood Wedding* (Wilma Theater, 2017), *Peter and the Starcatcher* (Theater Horizon, 2018), and *Hype Man* (Interact Theater, 2018).

**SAVE THE DATE!**

A TRAVELING CELEBRATION OF ART AND COMMUNITY

**EXILE-A-GOGO**

**MONDAY MAY 22, 2023**



## CAST & CREW

---

**Avista Custom Theatrical Services, LLC** (Properties), owned by Jennifer Burkhart and Amanda Hatch, was founded in 2007. Avista specializes in prop construction, upholstery, drapery and other soft goods construction, and maintains a 10,000 square foot rental warehouse in Norristown. Avista's prop master and design work has been seen locally at Opera Philadelphia, Azuka Theatre, Drexel and Temple Universities, Maukingbird Theatre, EgoPo Classic Theater, Theatre Exile, Inis Nua Theater, and Kimmel Center Education Department. Avista is especially grateful to be back in the theater scene this year, after 18 months of sewing face masks and dog accessories! Welcome back, Philly theater! [www.avistacustom.com](http://www.avistacustom.com)

**Dr. Kimmika L. H. Williams-Witherspoon** (Dramaturg) PhD (Cultural Anthropology), M.A. (Anthropology), MFA (Theater), Graduate Certificate) Women's Studies, B.A. (Journalism); is an Associate Professor of Urban Theater and Community Engagement and President of the Faculty Senate at Temple University. Author of *Through Smiles and Tears: The History of African American Theater (From Kemet to the Americas)* (Lambert Academic Publishing, 2011); *The Secret Messages in African American Theater: Hidden Meaning Embedded in Public Discourse* (Edwin Mellen Publishing, 2006), she has had over 34 productions of her plays, her stage credits include over 20 productions, 8 one-woman shows and she has performed poetry in over 120 national and international venues. A contributing poet to 44 anthologies, 11 books of poetry, 9 book chapters, 10 journal articles and 2 books on African American Theater.

**Janet Embree** (Production Manager) is thrilled to be part of the team at Theatre Exile. She has managed productions at Lantern Theater Company, Opera Philadelphia, the Pennsylvania Ballet and Philadelphia Artists' Collective, among others. She spent several years at the University of the Arts where she taught and managed productions in theater, dance and music. She also does professional upholstery for the stage and screen; one of her favorite projects can be seen in the 2018 Grammy Awards.

**Melody Wong\*** (Stage Manager) is thrilled to be working with Theater Exile. Recent credits include *Dreamgirls* with Theater in the X, *Di Hati Ku* with Fleisher Art Memorial and Modero & Co, *In Search of the Kitchen Gods* with 1812, Group!, *Janet Wide Awake* and *Ok Trenton* with Passage Theatre. *The Ongoing Plight of the Ferryman* at Plays and Players. Additional credits: SM for; *TURN! Polly Mope*, *Lashed but not Leashed*, *Black Light*, *The Outer Space*, *The Kinetic Tree*, PIFA 2016 at the Kimmel Center for the Performing Arts, *Minorityland* with PowerStreet Theater, *The Wiz* with Theater in the X, *Tiger Style* with Philadelphia Asian Performing Artists, *Master*

## CAST & CREW

---

**Melody Wong\* cont.** *Harold and the Boys*, with EgoPo Classic Theater, Barrymore Awards 2018/2019, ASM *Whitman! Contradict this!* with Bearded Ladies Cabaret, Assistant to the Director for the live capture of *La Traviata*, *Turandot*, *The Marriage of Figaro* with Opera Philadelphia. "

**Miranda Watkins** (Assistant Stage Manager & COVID Compliance Officer) is thrilled to be working with Theatre Exile for the first time! Their recent stage managing and assistant stage managing credits include *Dance Nation* with Temple University, *Dreamgirls* with Theatre in the X, and *Reverie* with Azuka Theatre. Miranda is currently pursuing their BFA in Technical Production and Management at Temple University.

**Nick Schwasman** (Technical Director) is theater artist and technician based in Philadelphia, PA. He has a BFA in Musical Theater from The University of the Arts, and a graduate certificate in devised performance from UArts / Pig Iron School. He was a co-founder/co-director of Drip Symphony, a local experimental performance company from 2017-2020. He has worked with Pig Iron Theater Company, Lighting Rod Special, Brian Sanders JUNK, David Gordon, The Renegade Company / Mike Durkin, Arden Theater Company, Lantern Theater Company, Plays & Players, and Philadelphia Scenic Works.

### Get our **EARLY BIRD Special** for Theatre Exile's Spring Virtual Workshop Series

THEATRE  
PHILADELPHIA

## ACTIVATE PROGRESS



#### **WORKSHOP 1** Saturday, June 3rd at 11:30am

Activate Progress for administrative, developmental & production teams **With LaNeshe Miller White**

Learn how to create inclusive marketing, outreach, and PR plans and create meaningful partnerships to connect with new audiences



#### **WORKSHOP 2** Saturday, June 10th at 11:30am

Activate Progress for creatives from all walks of life **With Kalif Troy**

Get a new perspective resume building, basic contract review and learn how to highlight your uniqueness in your audition.

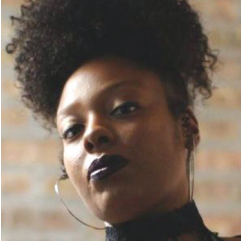
Each session is 90 minutes and on Zoom  
**\$25 per session Early Bird Registration \$35 after 5/23/23**



## CAST & CREW

---

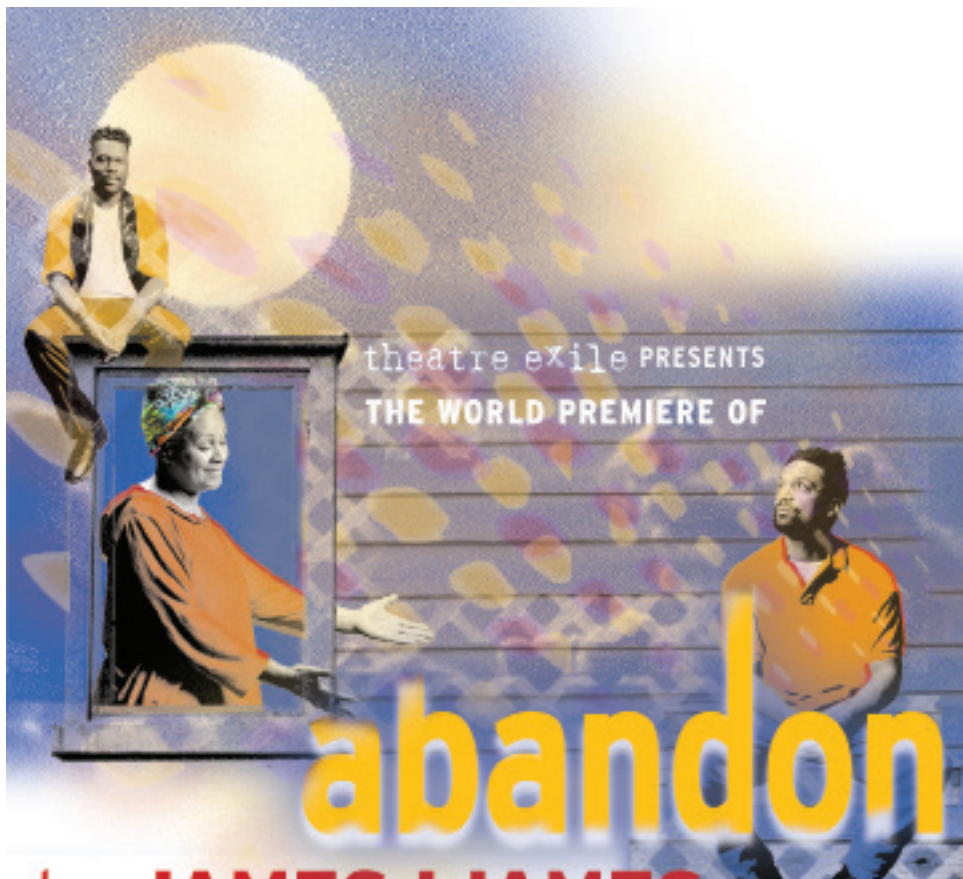
**Sophie Smyczek** (Assistant Lighting Designer/Master Electrician) is a Philly-based freelance electrician, excited to be back at Exile for her second show. Thanks to Bella and Matt!  
[www.sophiesmyczek.com](http://www.sophiesmyczek.com)



**Loy A. Webb** (Playwright) is a Chicago-born playwright, attorney and theatre journalist. Her plays include *The Light* (MCC Theater 2018/2019, Outer Critics Circle nomination for Outstanding New Off-Broadway Play; The New Colony 2017/2018, Joseph Jefferson Award) and *His Shadow* (16th Street Theater 2019/2020). She was an inaugural Tutterow Fellow at Chicago Dramatists, and as theatre journalist she is a member of the Association of Women of Journalist-Chicago, a past mentor with the AWJ-Chicago/Goodman Theatre's Cindy Bandle Young Critics Program, and a contributing theater critic for Newcity. Loy holds a B.A. in Political Science from the University of Illinois at Urbana-Champaign, and a J.D. from The John Marshall Law School. She is currently a writer on the AMC television series NOS4A2.

**Deborah Block** (Producing Artistic Director) has been a consistent figure in the Philadelphia arts community for over 30 years as a director, dramaturg, producer, curator, choreographer and educator. Deborah has been with Theatre Exile since 2006 and assumed the position of Producing Artistic Director in 2013. Prior to that she was one of the founding organizers of the *Philadelphia Live Arts Festival* and *Philly Fringe* (now FringeArts) and was the program director for ten years. She received her MFA at Temple University where she taught for nine years. Prior to that she taught at Rowan University, University of the Arts, and was a teaching artist in many K-12 programs. She has received much recognition for her professional and educational work including receiving the Independence Fellowship in the Arts and the Albert Benzwie Award for playwriting. She has sat on many local and national panels including Theatre Philadelphia. A sampling of her previous affiliations include Brat Productions, Theatre Ariel, Philadelphia Young Playwrights Festival, The Wilma Theater and the CEC. She has worked on over 60 professional productions. For Theatre Exile she has directed *Wolf Play*, *Extreme Home Makeover*, *Babel*, *Among the Dead*, *Sing the Body Electric*, *Guards at the Taj*, *Smoke*, *Red Speedo*, *Cock*, *The English Bride*, *Gruesome Playground Injuries*, *Iron*, *Hunter Gatherers*, *dark play or stories for boys*, *Roosters* and collaborated on *Hearts & Soles* and *Motherfu\*\*er with the Hat*.





theatre exile PRESENTS  
THE WORLD PREMIERE OF

# abandon

by **JAMES IJAMES**

**DIRECTED BY BRETT ASHLEY ROBINSON**

**APRIL 27 – MAY 21, 2023**

HONORARY PRODUCERS: LINDA & DAVID GLICKSTEIN and SUSAN AND EDWARD HOFFMAN

ASSOCIATE PRODUCERS: GAYLE & DAVID SMITH and THE BROTHERS NETWORK

FEATURING: **CARLO CAMPBELL, MELANYE FINISTER, JOSHUA E. NELSON, BRENSON THOMAS**

Luella is alone - haunted by the ghost of her son. Joshua is alone - kicked out of his house by his brother. One winter night these two people collide. Luella is looking for redemption; Joshua is looking for family. By the next morning, these two lonely souls are meshed together into an American Family in its truest sense. A world premiere by Pulitzer Prize winning playwright James Ijames, Abandon is sometimes violent, sometimes healing; with a gossamer veil that separates the worlds of the living and the dead, and shame and acceptance.



**PERFORMANCES AT THEATRE EXILE**

[www.theatreexile.org](http://www.theatreexile.org) 215-218-4022

## CAST & CREW

---

**Theatre Exile** is dedicated to enhancing the cultural experiences of Philadelphians and committed to creating community by sparking dialogue through the development and staging of artistically excellent and provocative contemporary plays that engage the imagination. Founded in 1996 by Joe Canuso and Trish Kelly, Theatre Exile was created by a group of artists who wanted to rattle the gates of the mainstream. In July, 2013 Deborah Block took on the role of Producing Artistic Director. Under her leadership Exile continues to produce plays that explore the complexities of the human condition packed with Philadelphia grit and passion. Exile is the first Philadelphia organization to produce such powerhouse playwrights as Tracy Letts, Lucas Hnath, Annie Baker, Rajiv Joseph, Rona Munro, and Hansol Jung among others. In 2016 Exile was named most fearless theatre by Philly Currents and Best Theater Company by Philadelphia Magazine. Exile received the Time Out Recommended Award 2017. For excellence in producing theatre, Exile has received 92 Barrymore nominations, with 19 awards. In 2017 Theatre Exile left their home to begin a new phase in Exile's life. Following her idea to create a new home in their old location in South Philadelphia, Deborah with the Board of Directors collaborated with Center City Development and Cecil Baker + Partners, and created a vision for a new theater that honors the art and maintains Exile's goals of working in an intimate and flexible environment. They moved into the new facility and produced their first play in 2019. In 2022 Theatre Exile won Best of Philly for Best Theatre Subscription and Best Local Theater Company by Metro Philly.

**Actors Equity Association** (AEA) was founded in 1913 as the first of the American actor unions. Equity's mission is to advance, promote and foster the art of live theatre as an essential component of our society. Today, Equity represents more than 40,000 actors, singers, dancers, and stage managers working in hundreds of theaters across the United States. Equity members are dedicated to working in theatre as a profession, upholding the highest artistic standards. Equity negotiates wages and working conditions and provides a wide range of benefits including health and pension plans for its members. Through its agreement with Equity, this theatre has committed to the fair treatment of actors and stage managers employed in this production. AEA is a member of the AFL-CIO and is affiliated with FIA, an international organization of performing arts unions. For more information, visit [www.actorsequity.org](http://www.actorsequity.org).

## SPECIAL THANKS

**Original African Art from the collection of:  
Dr. Kimmika L. H. Williams-Witherspoon & Three Goat Productions  
"Mary" painted by Ten Ebra and tenpixeldesigns**

**WIN A FABULOUS TRIP TO LOS ANGELES FOR 2!**  
Includes airline tickets, hotel, restaurants and entertainment, valued at \$3,100.  
**Tickets are \$100/each and only 100 tickets will be sold.**

**ESCAPE YOUR EXILE**

**RAFFLE**

**ON SALE THROUGH TUESDAY, FEBRUARY 14, 2023.**

## BOARD OF DIRECTORS

### Executive Committee

Desiree Salera, Chair  
Sterling Johnson, Vice Chair  
Francis Murphy, Treasurer  
Alison Ezell, Secretary

### Board Members

Deborah Block  
Robert Dever  
Michael Donahue  
Patricia Forcina  
Brett T. Mapp  
Tiffany Naiman  
J. Paul Nicholas  
Bryna Scott  
Dr. Jeffrey Sorkin  
Reuben Wade

### Exile Advisors & Committee Members

Ken Bingham,  
Vincent E. Fumo  
Anne Gemmell  
Tom Harmaty  
Liza Herzog

Shirley Lockwood  
Brett Ashley Robinson  
Gayle Smith  
Robyn Savacool

### Founders

Joe Canuso and Trish Kelly

## ADDITIONAL THANKS

**Brey Ann Barrett, Philadelphia Scenic Works, Fanny Jackson Coppin School & Franklin Learning Center, Mario Lanza Museum, Doug Smullens**





# JOIN OUR SOCIETY OF EXILES

## SUPPORTERS

We would like to give an extra special thanks to the foundations, corporations and individuals whose generosity supports our work. (This list includes gifts received from 7/1/21 - 1/09/23)

### **Businesses/Foundations/Government**

Anton Charitable Trust  
Brandywine Realty Trust  
Charlotte Cushman Foundation  
Delaware Theatre Company  
Flim Flam Film  
GlaxoSmithKline Foundation  
Independence Foundation  
Paul E. Kelly Foundation  
Charles Ludwick Foundation  
National Endowment for the Arts  
William Penn Foundation  
Pennsylvania Council on the Arts  
Quaker Printing Group  
Stark & Stark  
William K. Stewart Sr. Foundation  
Suzanne Roberts Cultural Development Fund  
The Blackbaud Giving Fund  
The Lida Foundation  
The Shubert Foundation  
United Way of Greater Philadelphia & Southern NJ  
June and Steve Wolfson Family Foundation  
Wyncote Foundation

### **Society of Exiles**

Dirk L. Allen & Glenn Sykes  
Sarah Anton  
Deborah Block & Doug Smullens  
Louis Bluver  
Michael Brett  
Jennifer & David Cardy  
Kathyanne Cohen & Adam Schless  
Fern & John Culhane  
Robert M. Dever  
Tobey & Mark Dichter

### **Society of Exiles, cont.**

Anna Maria & Rich Di Dio  
Gene & Charles Dilks  
Michael Donahue & Alex Moede  
Alison Ezell  
Patricia Forcina  
Bill Gehrman & Christopher Mullins, Jr.  
Linda & David Glickstein  
Barbara & Steve Gold  
Margaret Harris & Phil Straus  
Susan & Edward Hoffman  
Lorie & Nick Howley  
Annabelle Jellinek  
Sterling & Deena Johnson  
Paul E. Kelly  
Robin Sakina & Saifuddin Mama  
Brett Mapp & Morgan Hugo  
Joni Marcus & Eddie Greves  
Fran & Kathy Murphy  
Tiffany Naiman  
Christine Frost Red & Michael Wax  
Susan Rock & Michael Phillips  
Desiree Salera & Eric Okdeh  
Alycia & Tom Scannapieco  
Andrew & Bryna Scott  
Gayle & David Smith  
SaraKay & Stanton Smullens  
Dr. Jeffrey Sorkin  
Joe & Rachel Stern  
Debra & Bill Stewart  
Jerry & Jackie Sweeney  
Frances Visco  
Reuben Wade & Janice Smith  
June & Steve Wolfson

**MAKE A DONATION OF  
\$1,000 OR MORE TO  
BECOME A MEMBER.**

**SOCIETY OF EXILES receive:  
Invitations to:  
Opening Night  
Exclusive VIP events  
First rehearsal for our season shows  
Behind the scenes access  
Contact Denise Cavaliere for more  
information [denise@theatrexile.org](mailto:denise@theatrexile.org)**

## **SUPPORTERS**

### **\$500-\$999**

Karen & Mark Belding  
In Memory of Gene Bishop  
Carol Cook  
Diane Dalto & Richard Woosnam  
Erica & Matt Ezold  
Mimi Fleming  
David & Beth Medoway Kagan  
Judy Kaplow  
John Mackin & Danny Burke  
Gene Gualtieri & Mary McManus  
David Othmer and Maureen Othmer  
Lynn Marks & Clifford Pearlman  
Pam & Gresham Riley  
Benjamin Zuckerman & Marian Robinson  
Performing Arts Foundation  
William & Darlene Smith  
Barbara & James Sterchele  
Elijah Wald & Sandrine Sheon  
Gregory Walker

### **\$100-\$499**

Kim & David Adler  
Theresa Aristarco  
Dana & Melissa Ash  
Georgia & Barrie Ashby  
Nancy Bastian  
Carol Beam  
Daniel & Susan Behrend  
Mark Belding  
Michael Hollinger & Megan Bellwoar  
Jay & Nancy Berkowitz  
Barbara Block  
Daniel Boylen  
Susan C. Brenman  
Jean Brody  
Jay Bruff  
Add Matt Bulfair

### **\$100-\$499 contd.**

Marian & John Bumbaca  
Monika Burke  
Richard Buxton  
Beth Cohen  
Heather Coyne  
Liza Herzog & Paul Curci  
Cynthia Dahl  
Emily Darigan  
Rhonda Dickey  
Debbie DiGiacobbe  
Mary Gillett & James Dimartino  
Robert DiSerafino  
Gregory DiStefano  
Cynthia Dunlap  
Neil Durkin  
John & Lois Durso  
Debra Every  
David Finger  
David Ingram & Melanye Finister  
Dr. Judith Finkel  
Susan & James Fiordeliso  
Alphabet Academy  
Sabrina Galloway  
Jacqueline Goldfinger  
Rachel Harr & Keith Stallone  
Ralph & Natalie Hirshorn  
Joy Hockman  
Jo Holz  
Esther & Robert Hornik  
Caren Hosansky  
Miriam Indenbaum  
Judy Adamson & Fred Jackes  
Randall Johnston  
Sam & Connie Katz  
Leslie Kaufman  
Dorilona Rose & Michael Kay  
Nancy Boykin & Dan Kern

## SUPPORTERS

---

### \$100-\$499 contd.

Ken Kesslin  
Marta & Bill Kiesling  
Elliott Korsen  
Valerie Koscelnik  
Carolyn Schlecker & Bob Kosseff  
Myra Kranzel  
Robert Krebs  
Allen J. Kuharski  
Melanie Kzirian  
Paula Cramer & Warren Laddon  
Ruth & Peter Laibson  
Marilyn Lammert  
Elisabeth & Russ LaMotte  
Martha & Marshall Ledger  
Eva & Michael Leeds  
Natalie Levkovich  
Ronald VanLangeveld & Karen Lichter  
Shirley Lockwood  
Kim Loux  
Debby & Barry Lurie  
Jeffrey Brown & Sandee Mandel  
Shara Neidell & Carlos Martin  
Anonymous  
Michael McCaney Jr.  
Scott Mccreary  
Richard Moberg  
Nancy Burd & Mel Nasielski  
John & Judith L. Peakes  
David Bushnell & Kimberly Pelkey  
Dr. Julie Phillips & Chris P. Shaw  
Darnelle Radford & Matthew Mastronardi  
Ruba Club Studios  
Domenic Sanginiti  
Louis Sansivero  
Eric Schaeffer  
Stephen Platt & Robin Schauler  
Elana Benamy & Ray Scheinfeld  
Ruth Septee  
Gail Sidewater  
Rebecca Silver  
Donor Recognition  
Sam Stead  
Julie & Pete Stern  
Joan E. Stoner  
Bert & Lynne Strieb  
Anne & Edward Wagner  
Mary Goldman & Debbie Weiner  
Robert Wickline  
David Cramer & Christina Wiita  
Melinda Williams  
Bob Weinberg & Eleanor Wilner

### \$100-\$499 contd.

Pam & Ed Zenzola  
Mark Zwanger

### \$10-\$99

Che'Rae Adams  
Patreshettarlini Adams  
Anonymous  
Michael Auritt  
Cosmo Baker  
Harry F. Bambrick  
Sally & Mo Barron  
Michael Bartz  
Leigh Goldenberg & Aaron Bauman  
Anna Bays  
Benjamin Behrend  
Debra Bensala  
Irene Berkowitz  
Marjorie Bicknell  
Barry Brait  
Talmage Brennan  
Arielle Brousse  
Oleg Brovender  
Louis Brown  
Devan Callahan  
Anthony Camp  
Benjamin Camp  
Jack Cardonick  
Timothy Carey  
Denise Cavaliere  
Maria Ceferatti  
Madeline Chantion  
Kathleen Charamella  
Heather Colletto  
Brian Collins  
Elizabeth Cooper  
Anthony and Mary Creamer  
Gina Creatura  
Leonard Cupingood  
Brenden Dahl  
William Day  
Carmetta Dickerson  
Robert Dilullo  
Jay Donner  
Maxine Dubin  
Dane Eissler  
Charles Emlen  
Nena Eskridge  
Cheryl Fedyna  
Caroline Fernandes  
Carol Fisher  
Courtney Flanagan-Chobert

## SUPPORTERS

---

### \$10-\$99 contd.

Juliana Flower  
Herpich Franziska  
Vincent E. Fumo  
Chaim Galfand  
In Memory of Michael Gannon  
Lawrence Geller  
Nancy Geryk  
Stan Gibell  
Chris Gibson  
Sybil Gilmar  
Bill Goldberg  
Robert Gorchov  
Kavitha Goyal  
Louis Greenstein  
Michael Greer  
Grace Grillet  
Terry & Paul Guerin  
Hermie Leung  
Martha Hagerty  
Stephen Harlen  
Tom Harmaty & Barb Weinstock  
Roberta Hart  
Jean Haskell  
Karen Healey  
Harriet Power & Bob Hedley  
Tom Helmer  
Mickey Herr  
Archibald Hewes  
David Hodges  
Sheru Hoffman  
Bonny Hohenberger  
Anne & Tim Hunter  
David Jadico  
Barb Jamieson  
Elizabeth Jobes  
Gage Johnston  
Patricia Kane  
Juliette Kang  
Bruce Katsiff  
Elizabeth Kaufer  
Anonymous  
Alisa Peet  
Suzanne Petruzel  
Mjumbe Poe  
Rosemary & Frederick Porsche  
Jennifer Procopio  
Carla Puppin  
Kaytee Ray-Riek  
Ro Red  
Iraisa Ann Reilly  
Kenneth Richman

### \$10-\$99 contd.

Abigail Kay  
John Kay  
Joe Kelly  
Katherine Kelton  
Megan Kiesel  
Daniel Kim  
Dorothy Koons  
Tom Kraines  
Diego Lanao  
Diane Leimbach  
Ruthie Levikoff  
Rebecca Levine  
Margaret H. Lonzetta  
Diane Rurode and James Lord  
Anonymous  
Cirel & Howard Magen  
Moiria Kelly Marano  
Linda & David Marder  
Frances G. Martin  
David and Kevin Maynard  
Shira & Alan McCormick  
Mary Pat Walsh  
Hugh McHugh  
Kathryn McMahan  
Fran Metzman  
Jonathan Meyers  
Bill Miele  
Olga Mollot  
Fran Morrone  
Laurie Mufson  
Margaux Murphy  
Paola Noguera  
Charlene Nolton  
Eric Nuemann  
Rachel O`Hanlon-Rodriguez  
Jon Olivieri  
Joann Oseroff  
Sheri Ozard  
Danalice Pacheco  
Jhon Jairo Pajon  
Robin Rodriguez  
Jeffrey Rosenbach  
Murray Dubin & Libby Rosof  
Robert Ross  
Judith Sachs  
John and Christel Salera  
Emma Saloky  
Doug Schaller  
Roberta Schoen  
Rachel Rose Shalev  
Barbara Shapiro



## SUPPORTERS

### \$10-\$99 contd.

Devon Shayne  
Stephanie Shepard  
Victoria Shertel  
Lois Shestack  
Jennifer Shropshire  
Sarah Singer  
Maria S Sklavos  
Corey & Jonne Smith  
Karen Smith  
Kristyn Chouiniere Smith  
Sandra Smith  
Shirley & Cecil Smith  
Wendi Smith  
Jessica Snow  
Raymond Sorber  
Heather Speirs  
Margaret Spencer  
Paul Stead  
Blanche & George Steele  
Diane & Richard Steinbrink  
Vanessa Sterling  
Sarah Stroney  
Mary Stumpf  
Charles Sutphen

### \$10-\$99 contd.

Brett Smith & Joseph S. Sutton III  
Judith Sznyter  
Jessica Tanksley  
Anonymous  
Ahsley Tomisek  
Frank Trommler  
Gary Tumolo  
Ubong Udoekwere  
Amber Venti  
Margo Villanova  
Kim Vo Paul Waimberg  
PJ Walkling  
Meghan Walsh  
Stephanie Kyung-Sun Walters  
Edward Warchol  
Thom Weaver  
Cynthia Weiss  
Jacqueline Weitzner  
John Wind  
Jane Winkel  
Tomoyo Yamada  
Ruth Yaskin

theatre exile **VENMO TO GIVE!**

Theatre Exile depends on support from  
those who share our vision to  
promote new voices in theater.

**Gifts of every size  
make a difference!**



# THEATRE EXILE TEAM

---

## **Deborah Block, Producing Artistic Director**

### **Business/Administration**

Darnelle Radford, General Manager  
Carolyn Schlecker, Operations Consultant  
Randi Alexis Hickey, Patron Services & Associate Operations Manager  
Autumn Valdez, Bookkeeper  
Mia Christensen, Intern  
Rose Farrell, Intern  
Yuanjun Yao, Intern  
Edgimo, Website  
Andrew Nelson, IT Consultant

### **Artistic**

Matt Pfeiffer, Artist in Residence

### **Education**

TS Hawkins, Director of Education

### **External Relations**

Denise Cavaliere, Director of Individual Giving  
Anne Marie Cammarato, Grant Writer  
En Route Marketing, Tracy Bucholz & Billy Cook

### **Community Engagement**

Sebastienne Mundheim, Producer and Project Manager, Out of Exile

### **Building and Venue Maintenance**

Shane Walsh, Building Manager  
Rosa Mendez, Housekeeper

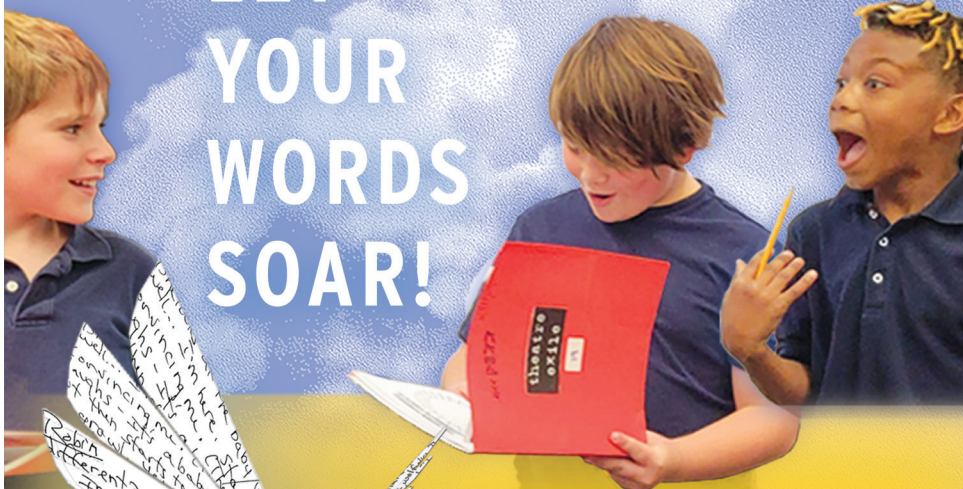
### **Production**

Janet Embree, Production and Facilities Manager  
Melody Wong, Season Stage Manager  
Natalie Merrill, Season Audio Engineer  
Nick Schwasman, Technical Director  
Sophie Smyczek, Master Electrician  
Matthew Bock, Electrics  
Isabella Capelli, Electrics  
Rose Ferrell, Electrics  
Blake Hastings, Carpenter  
Stephen Peterson, Carpenter  
Jasper West, Carpenter  
Casie Weaver, Carpenter

### **Front of House Staff**

Luke Coffey  
Noah Sturtridge  
Becca Smith  
River Von Waldron

LET  
YOUR  
WORDS  
SOAR!



**2023**  
**PAPER WINGS**  
**SPRING BREAK**  
**THEATRE CAMP**

**MONDAY APRIL 3-FRIDAY, APRIL 7, 2023**  
**Students in 6th-12th grade**

**Price \$350** Registration required  
Scholarships available

**In Person at Theatre Exile**  
1340 S 13th Street  
Philadelphia, PA 19147



theatre

exile